

Renville County Probation/DOC

District Supervisor:

Sarah Eischens

Mission: Transforming Lives for a Safer
Minnesota

May 6 , 2025



Renville County Probation Staff

Hailey Stoffel
Contract GMD/MSD
Adult

Mariah Frank
Contract Juvenile/
Pretrial

Mile Kranz
Adult Felony
Sex
Offender/Enhanced

Andre Wohnoutka
Adult Felony
Minimum/Medium

Tamara Johnson
PSI
Renville/Redwood

Kim Anderson
County Support Staff

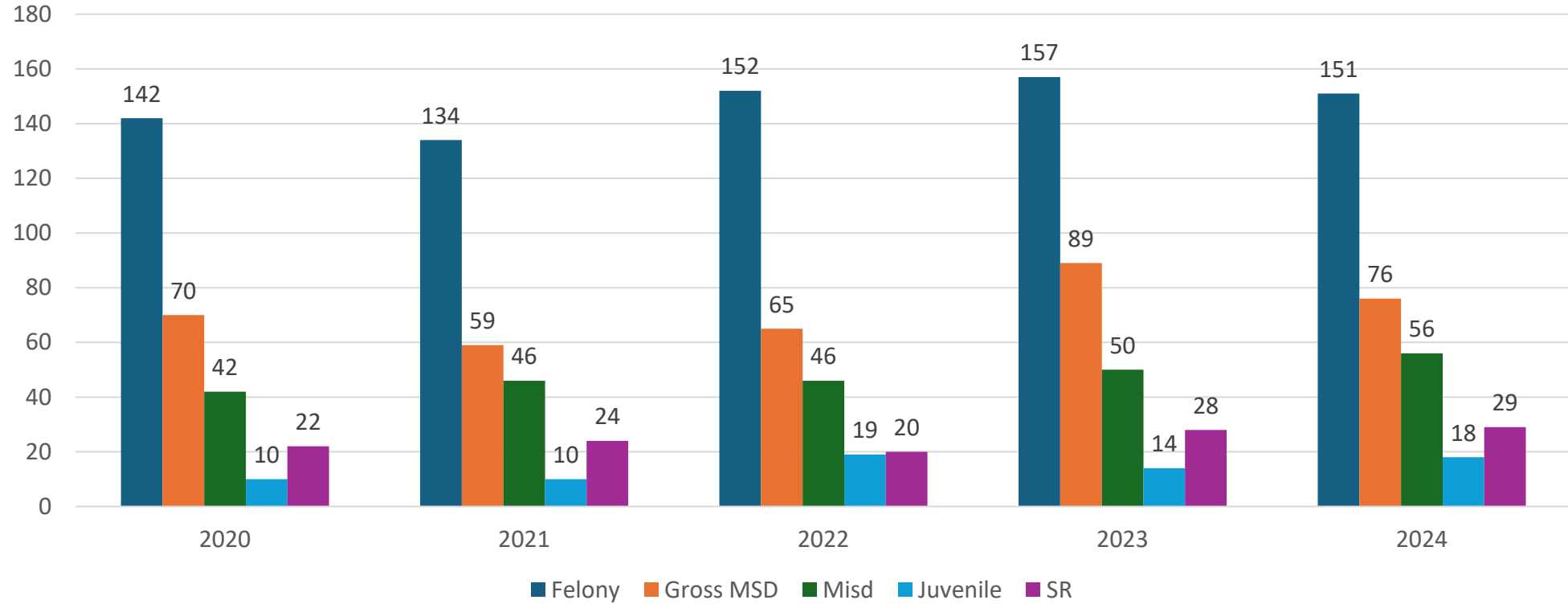
Sarah Eischens
District Supervisor

Renville Caseloads

- MSD/GMD : 144
- Adult Sex Offender: 20
- Felony Adult: 178
- Juvenile :14 (1 placement)
- Pre Trial : 23

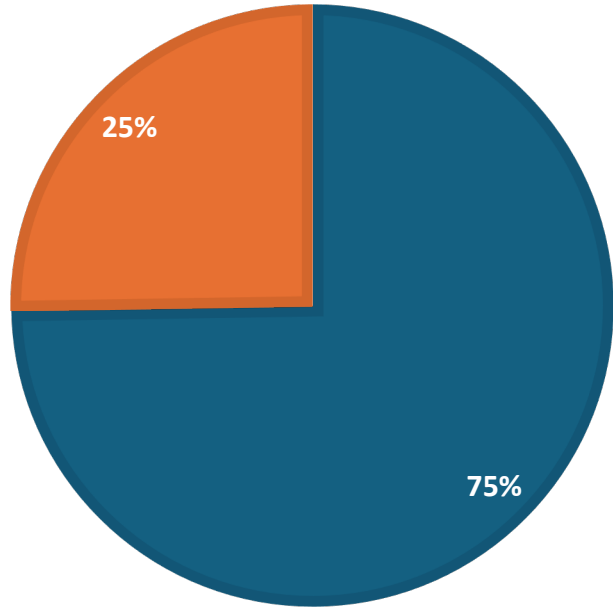
- **Total: 380**

Probation Survey Clients-Renville



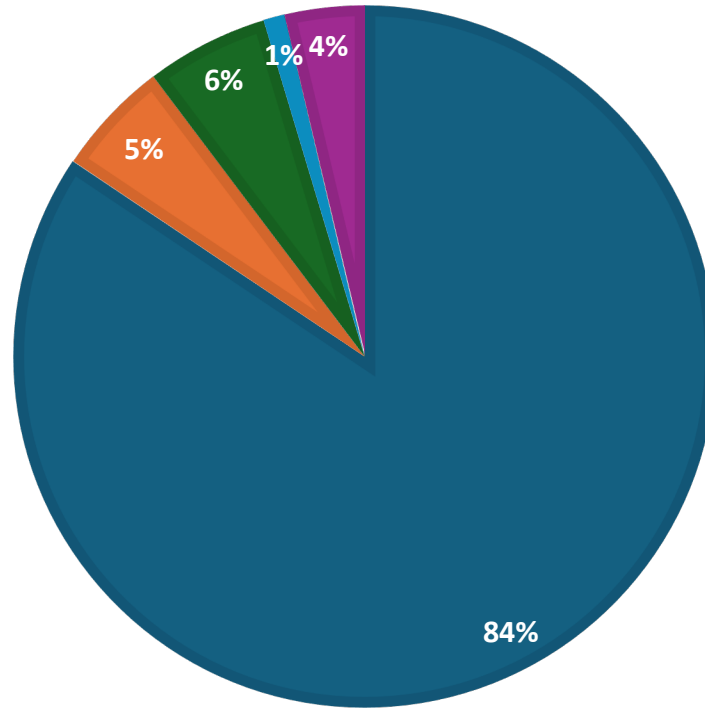
GENDER

■ Male ■ Female



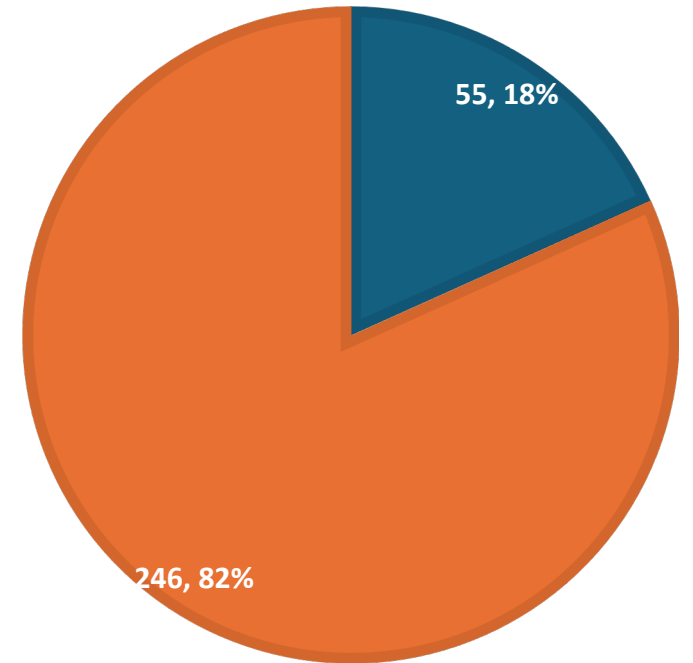
RACE

■ White ■ Ameri Ind ■ Black ■ Asian ■ Other

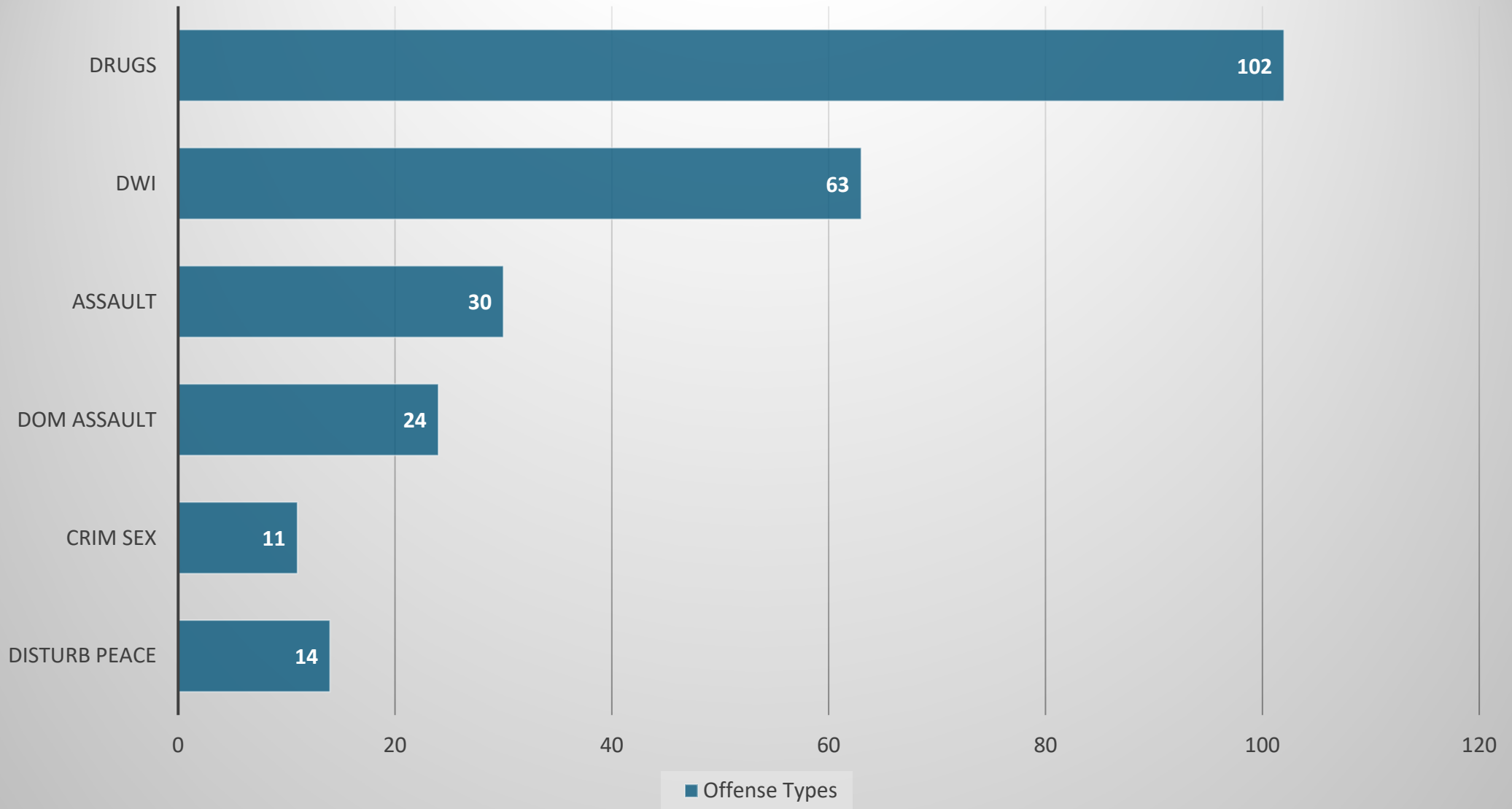


ETHNICITY

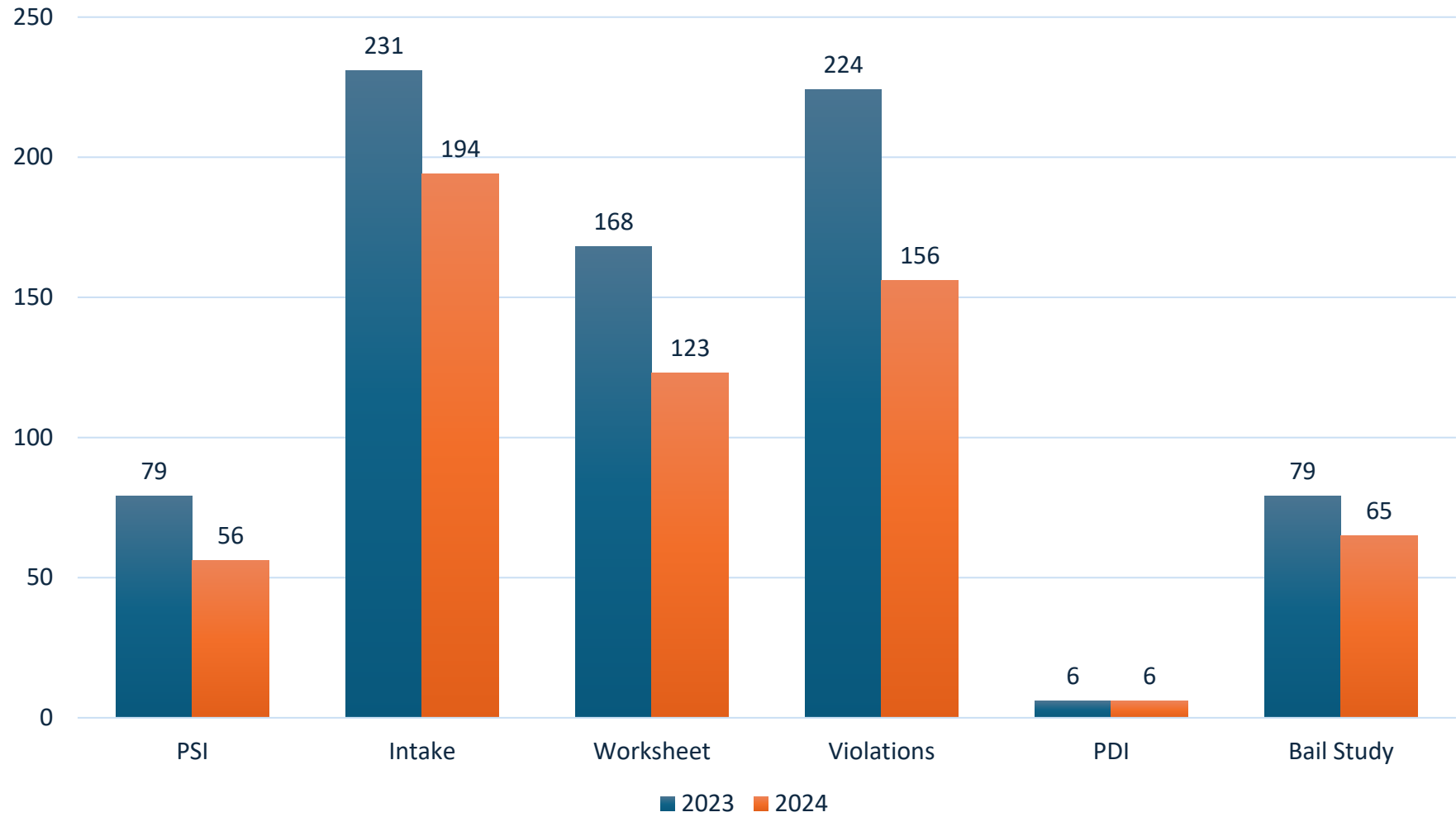
■ Hispanic ■ Non Hispanic



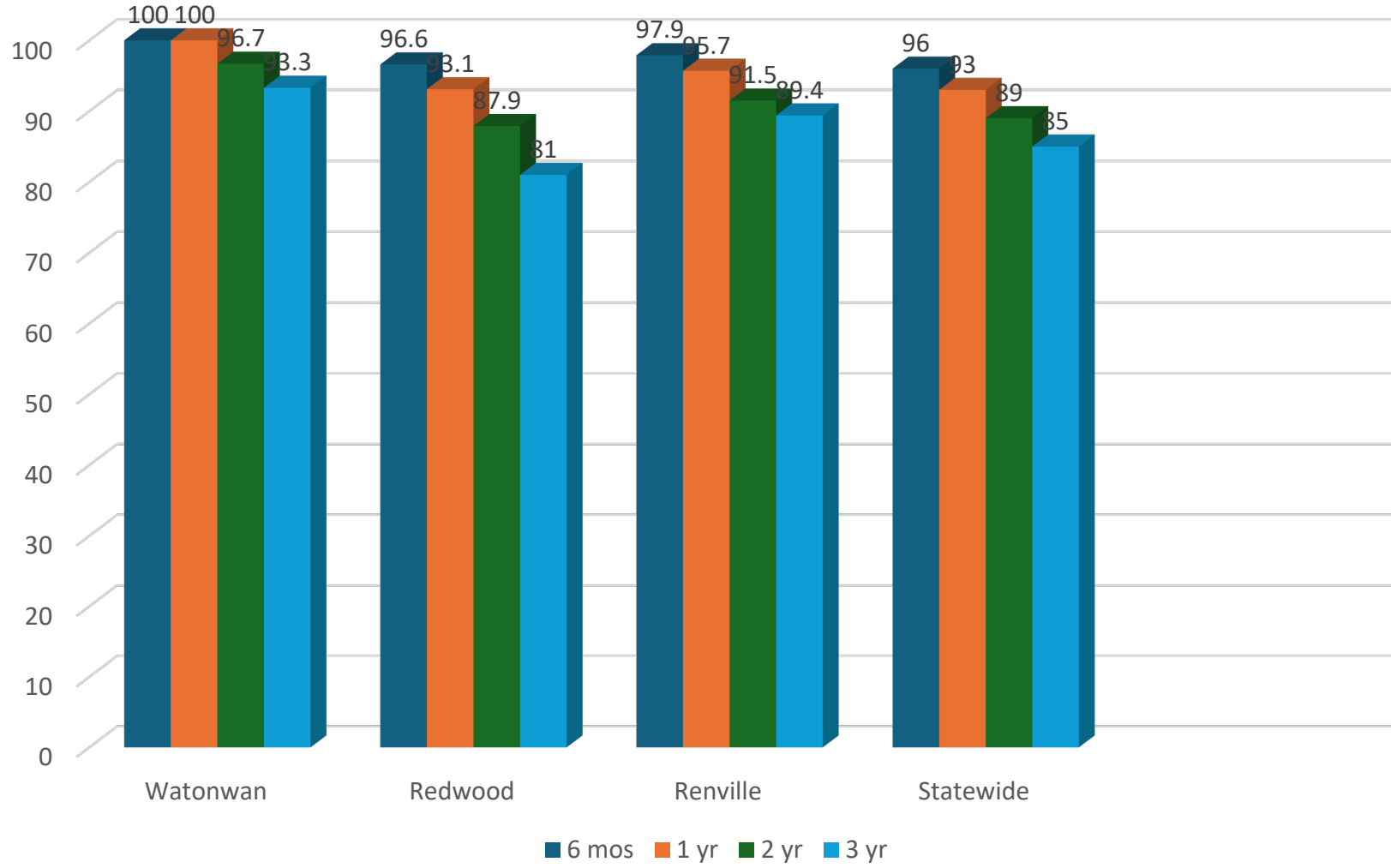
2024 Offense Types



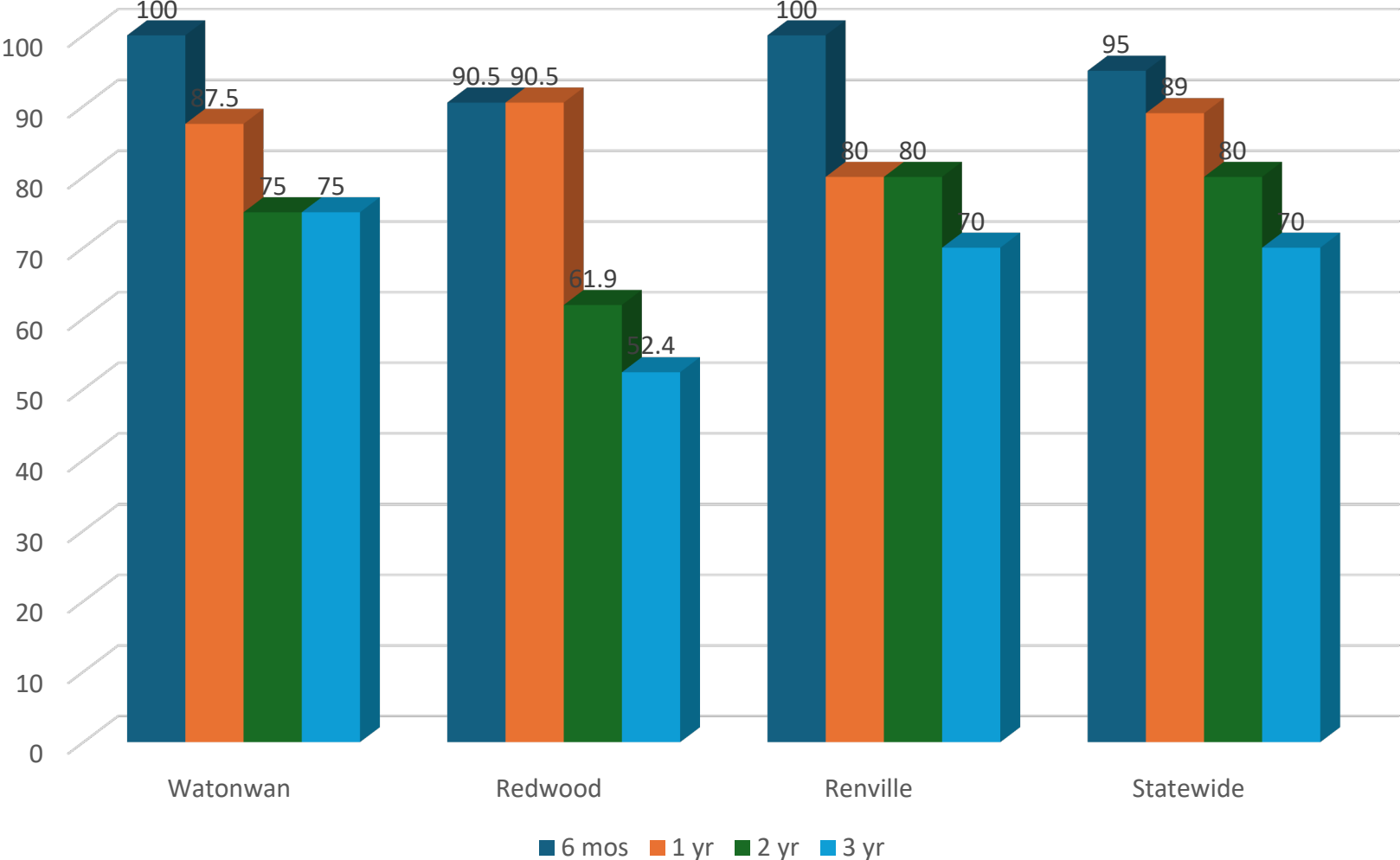
Tasks



Probation Recidivism Rates- Closed 2019



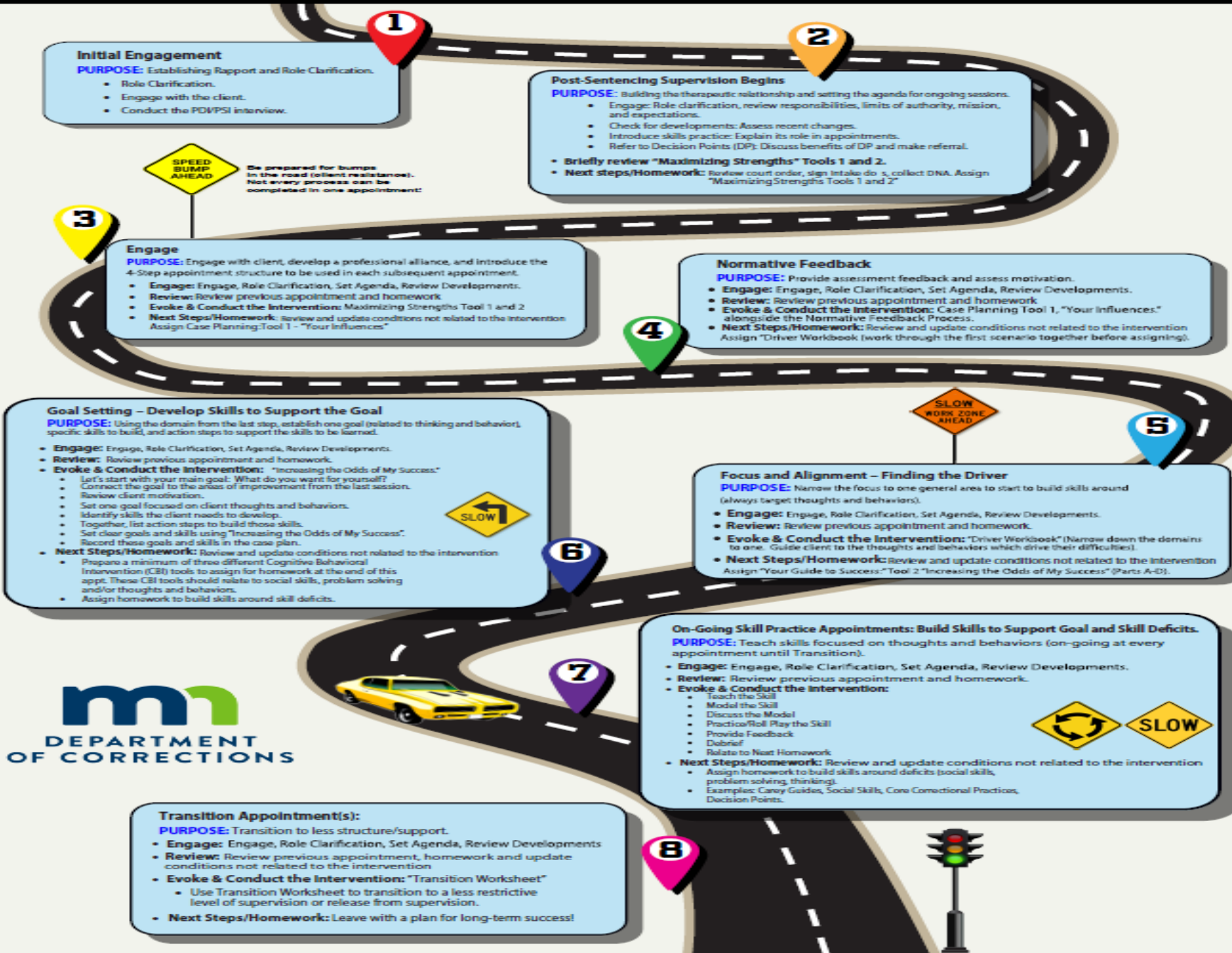
Supervised Release Case Closed 2019



Highlights

- Decision Points is a virtual 16- week Cognitive Skills program offered to high –medium risk clients, at no cost. The program helps participants to identify thoughts and feelings that lead to trouble and replacing them with pro-social thoughts and actions. All four agents are trained to co-facilitate the group.
- Renville Probation offers color wheel testing to pretrial and probation clients. The color wheel is a test line where clients call daily and come into test when their color is called. Agents conduct testing on specific days and clients are to report into the office during testing times.
- The DOC has been leading the state in coaching agents to improve outcomes with clients. We are using the four-step model to engage in supporting clients to focus on making positive changes. Renville agents participate in individual and Coaching Circles to improve skills.
- Renville Office pretrial supervision program, that offers testing and monitoring while defendants are released from custody awaiting resolution of their case. Renville has a Specialized Sex Offender agent.
- Corrections Advisory Board, meets quarterly to be educated and discuss topics related to probation and criminal justice system.
- Agents are utilizing individual cognitive interventions during meetings; help develop skills and to target high risk areas. Agents are starting to use the Roadmap as guide. To use individual intervention such as Carey Guides and core correctional practices.

Case Plan Roadmap – A GUIDE TO SUCCESS



Renville County

- DOC pays for all felony level supervision costs including two probation agents and 50% of one county support staff position in Renville. DOC pays for 50% of the two agent positions providing supervision to Juveniles and Misdemeanor/GMD cases. County pays portion of supervisor's salary, shared amongst other counties and DOC.
- DOC contributes to rent for office space, covers all IT support- equipment, training unit, human resources, legal department, research department, and manage analyst for database support.
- County maintains control and staffing level input for MSD/GMSD/Juv portion of office. Board approves budget and any new hiring.
- The DOC is leading the state in evidence-based practices in probation. We offer cognitive skills groups and individual interventions while providing coaching to agents. EBP unit to help support efforts.
- Specialized caseloads, example sex offender and pretrial.
- Anticipated costs for Renville County after all reimbursements is under \$190,000

Questions?

Thank you for your
time



Sarah Eischens

Email: sarah.eischens@state.mn.us

Phone: 507-381-0348