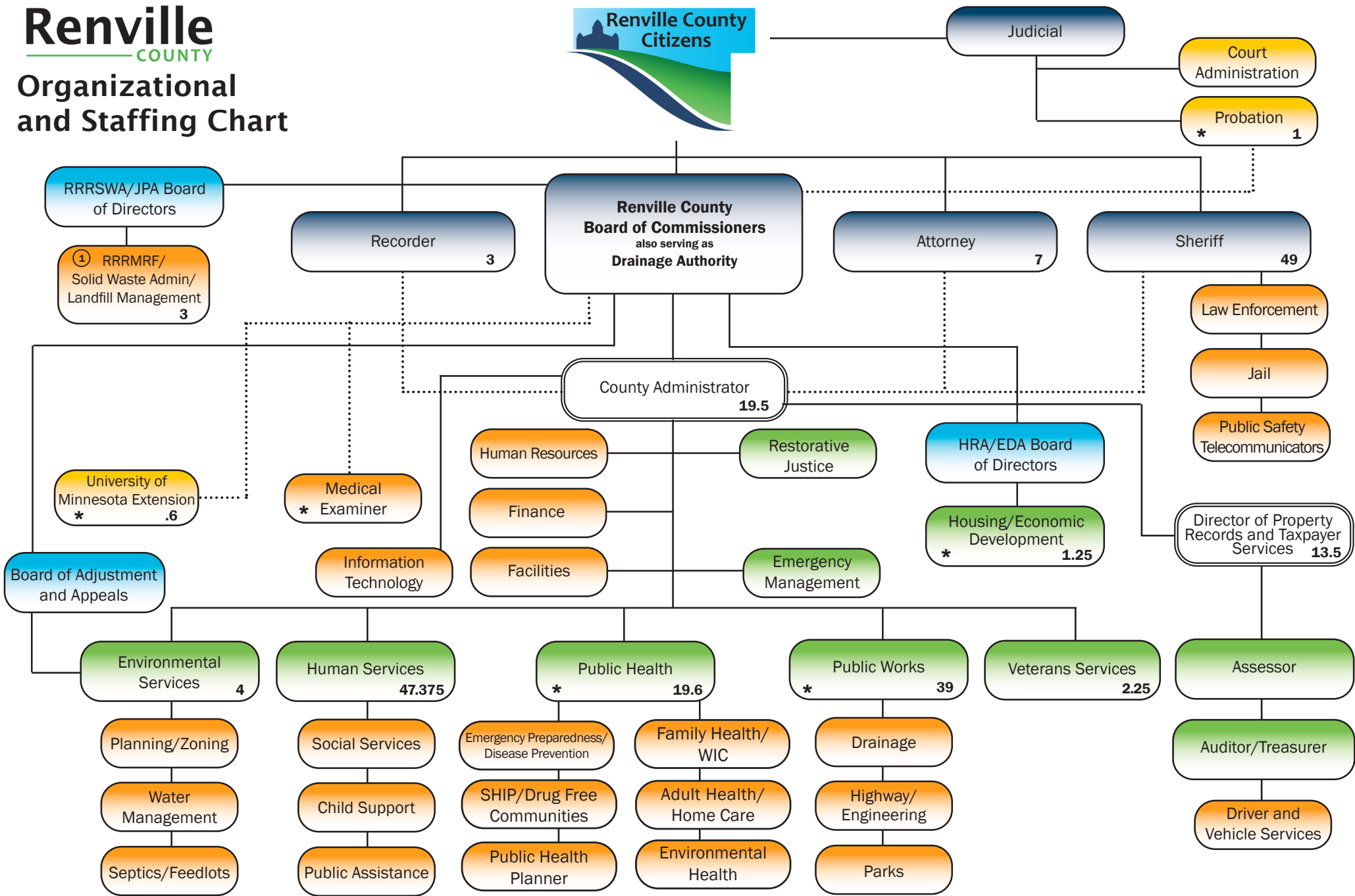


Organizational and Staffing Chart



Elected Official
 Department
 Unit/Service
 Board
 Other

 Direct Report
 Indirect Report

Total FTE's: 208.15 Numbers represent FTE's based on budgeted hours, not including contracted staff (represented by *)

① Renville County is the Fiscal Agent for the RRRSWA Joint Powers Entity.