



Renville

COUNTY MESSENGER

CONNECTING YOU WITH YOUR COUNTY GOVERNMENT

Volume 13

Summer 2014

Issue 2



Looks to the *Future*



(L-R) Dr. Buhr, Dr. Lindquist, B. Mehlhouse,
D. Nelson, L. Jacobson, J. Stahl, B. Ehlers



(L-R) P. Setzphandt, B. Fox, S. Maher,
L. Jacobson, J. Stahl, R. Kramer, S. Folsted

RENVILLE COUNTY HOSPITAL & CLINIC TIMELINE ~ 1948-2015

1948 1 st RC Hospital Approved	1949 Construction Began	1951 Dedication	1975 Inpatient Wing Added	2002 Designated Critical Access Hospital	2007 Purchased Prairie Family Clinics
2012 Strategic Planning Conducted	February 2013 Architectural Design Reviewed	February - April 2013 Staff Led Informational Community Meetings	April 2013 Commissioners Approved Building RC Hospital & Clinic	September 2013 USDA Rural Development Committed Financing	
January 2014 Property Purchased	April 2014 Ground Breaking	April 2014 Plat Recorded	May 2014 Excavation Began	Fall 2015 RC Hospital & Clinics' New Facility Opens	

CONTINUES ON NEXT PAGE



(L-R) M. Lahr for Senator Klobuchar, Congressman C. Peterson, Dr. D. Lindquist

The ground breaking ceremony for the newest Renville County Hospital and Clinics (RCH&C) building was held on a beautiful sunny afternoon this past April. Two years of discussion, planning, financing, and County Board approval led up to this momentous event. The ceremony, planned by Sara Maher, Director of Marketing, RCH&C, took place at 100 Healthy Way located south of Highway 212 and east of 1st street on the east end of Olivia. The event began with a welcome by Nathan Blad, CEO, RCH&C, followed by an invocation by Pastor Matt Hausken, Hospital Foundation Board Member. Representatives from county and federal government, the city of Olivia, local medical staff, the hospital and clinics' capital campaign committee, and fiscal partners stepped up to the podium and shared their support and enthusiasm for the new medical center. Next, the Renville County Hospital & Clinics Board members, Dr. Paul

Buhr, Bob Ehlers, LaMont Jacobson, Dr. Dean Lindquist, Bob Mehlhouse, Dolores Nelson, John Stahl, and Nathan Blad used shiny gold shovels to break the corn stubble farm ground for the new project. Also breaking ground were the Renville County Commissioners, John Stahl (Board Chair), Bob Fox, Randy Kramer, LaMont Jacobson and Paul Setzepfandt, County Administrator Sara Folsted, Congressman Colin Peterson, Megan Lahr representing Amy Klobuchar, Suzanne Hilgert (Mayor of Olivia), members of the RCH&C building committee, members of the AgStar Financial Services, and staff from the USDA Rural Development.

This was not the first Renville County Hospital ceremony. Members of the local Kiwanis club formed a committee and started the planning process for the first Renville County Hospital in 1945. The plan was approved in 1948 and construction began in 1949 under the supervision of Carl Beutow, an architect from St Paul, Minnesota. The dedication for the new Hospital was held in January, 1951 with an estimated 3,000 people in attendance. The county commissioners appointed the first Renville County Hospital Board, the membership represented the commissioner districts and included: long time supporter H. R. Pfeiffer, Lloyd Mehlhouse, Gertrude Mitchell, Norman Raitz, Wallace Johnson, William Rudeen, Margaret Baumgartner, Guy Simon, Claus Clausen. Later that year, a hospital auxiliary comprised of over 2,000 members located throughout the county was formed.

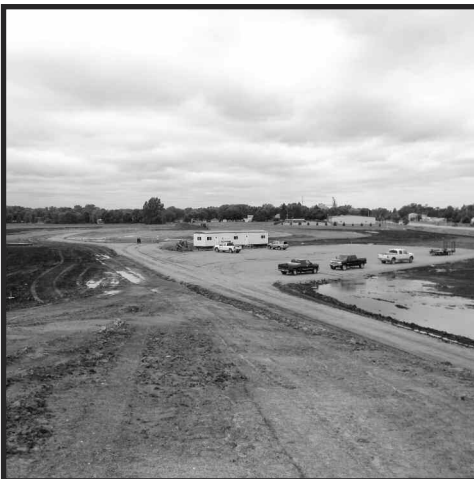
A major change for the hospital occurred in 1975 when an inpatient wing was added to the east side of the current hospital. The process to add the wing began in March of 1972 when hospital architects and planners presented the county commissioners and the hospital administrator Forest Rathbun, with information on various techniques to update and improve the current county hospital. Then in November of 1973 the area wide Comprehensive Health Planning Agency recommended that the State Board of Health



Foundation Excavation

issue a Certificate of Need to Renville County to construct a wing and remodel the existing hospital. The county board voted to proceed with the project and bids were accepted in September of 1974. Construction began shortly thereafter and an Open House was held for the remodeled hospital and new inpatient wing in December 1975 with tours conducted by members of the Hospital Auxiliary.

In 2002 the Renville County Hospital was designated as a Critical Access Hospital(CAH) by Medicare. The CAH certification requirements include: having a specific number of inpatient beds; maintaining an average length of stay for acute inpatient care; offering 24-hour, 7-day-a-week emergency



Early RCH&C New Facility Construction Site



Early RCH&C New Facility Construction Site



Looks to the
Future



Digging Footings

acute inpatient care; offering 24-hour, 7-day-a-week emergency care; and being located in a rural area. The next major change, a merger of the Prairie Family Practice Clinics and the Renville County Hospital occurred in 2007. It was determined that the hospital and clinics working together as one entity rather than two standalone groups would make the whole stronger. The merger was a

means to provide Renville County's local health care with a stronger future. The

merger organization was named Renville County Hospital and Clinics(RCH&C).

RCH&C began a strategic planning process in 2012 to chart the future for the organization. The hospital board retained industry professionals to conduct a thorough analysis of available options. One of the outcomes of the process was to consider constructing a new building to house the hospital and clinics. The architectural firm, Pope Architects, drew up plans for a new Hospital and Clinic facility. From February through April, RCH&C staff led informational meetings throughout the county. The meetings were designed to inform county citizens about the future direction RCH&C was planning to take to provide health care in Renville County. In April the County Commissioners approved the building project for a new RCH&C facility. Then in September the USDA Rural Development committed to providing financing for the project.

This year the project has continued with the purchase of property for the facility, and a plat for the property was approved and recorded. Excavation began in May, footings poured in June/July, and construction will continue on through the rest of 2014 and into 2015. The plan right now is that the new facility will open in the Fall of 2015. The county and hospital and clinics have and will continue to work hand in hand on the project. The various departments and staff of the county and hospital including Administrators, Emergency Management, Human Services, Public Health Services, Public Works, and Recorder are working together in a shared effort to see the facility completed in a timely fashion and then provide patients and their families with the support and care they need in a comfortable and healing environment.



Pouring Footings



Poured Footings



Renville County Heartland Express Receives Donation

Renville County Heartland Express recently received a generous donation in the amount of \$1,233.89 from the Women of the ELCA of Our Saviors Lutheran Church located in Bird Island. The group held an Ice Cream Social and decided the proceeds would be given to Heartland Express. Rachel Schneiderman, Heartland Express Transit Director, said, "we were so excited to see this donation and happy to hear that they had chosen Heartland Express. We applaud them and are so thankful that they chose us to receive this donation."

If you would like to make a donation to
Heartland Express
Rachel Schneiderman
320-523-3589

2014 MN ELECTION DATES

Primary Election
Tuesday, August 12, 2014

General Election
Tuesday, November 4, 2014

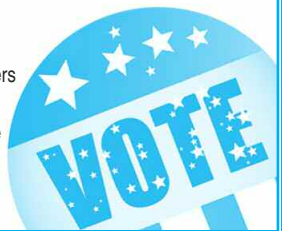
OFFICES ON GENERAL ELECTION BALLOTS STATEWIDE:

- U.S. Senator
- U.S. Representative
- State Representative
- Governor & Lt. Governor
- Secretary of State
- State Auditor
- Attorney General

LOCAL OFFICES ON GENERAL ELECTION BALLOTS STATEWIDE:

- County Commissioner
- County Auditor/Treasurer
- County Attorney
- County Recorder
- County Sheriff
- City Officers
- School Board
- Township Officers
- City Bond Issue

If you need to register to vote or have questions, please contact the Renville County Auditor-Treasurer's office at 320-523-2071.





SAFE ROADS COALITION TO FORM

Kandiyohi-Renville Public Health recently completed a community health assessment and compiled the top ten health issues for the counties. Motor Vehicle Injury was identified as a priority for Renville County. Over the period from 2007-2013, there was a statistically significant disparity between Kandiyohi and Renville Counties concerning traffic fatalities per capita. Kandiyohi ranks in the top best 15 of Minnesota counties, whereas Renville County ranked poor, near the bottom (84th out of 87 counties). Renville County has an abnormally high traffic fatality per capita rate.

As a result, a Renville County Safe Roads Coalition is being organized in Renville County. The goal of this coalition is to move Renville County toward zero deaths on our roads. The Renville County Safe Roads Coalition will use the principles of the Toward Zero Deaths state initiative involving the 5 “E’s”:

- Education (Public Health, Schools, Driving Schools)
- Enforcement (Sheriff and Police Departments)
- Engineering (County Highway Engineer, City Planners)
- Emergency Services (First Responders, Ambulances, Fire Departments, Hospital and Clinics)
- Everyone Else (Concerned Citizens, Policymakers, Attorneys)

All of these facets are needed to address this public health and safety issue. Crashes do not occur in a silo, so collaboration is the key.

As Renville County Safe Roads Coalition launches this first year, we will work to build our membership. We will be reviewing data, establish a Fatality Review Committee, participate in training, and develop work plans at regular meetings.

If you are interested in being a member or want more information, contact:

Jill Bruns (Public Health) at 320-523-3723 or Jeff Marlowe (Public Works) at 320-523-3591

Key findings from statistical data on car crashes in Renville County from 2009-2013

- Not only does Renville County rank poorly in traffic fatalities per capita, we also are above the state and regional average for serious injuries and fatalities per vehicle miles traveled.
- Renville County is better than many counties in the region for serious injuries and fatalities due to lane departure (run off the road to left or right, or head-on crashes)
- Renville County ranks high in the region for intersection related fatalities and serious injuries, with T-bone and rear-end crashes the most frequent.
- Distracted-related crashes are on the rise, with the youngest and oldest populations the most impacted.
- There has been progress made on the reduction of alcohol-related crashes, but it still is a concern.
- Speed or not driving to conditions is a factor in 9% of Renville County crashes.
- A persistent challenge is unbelted occupants. 40% of the fatalities and serious injury crashes in Renville County were not buckled up. More males tend not to use seat belts.
- Crashes are more frequent during summer months.
- One-third of traffic fatalities and serious injuries in the region involved 16 to 30 year olds, and 2/3 of fatalities are male.

**Renville
County**

500 E. DePue Ave.
Olivia, MN 56277

Phone: 320-523-3710

Email: admin@co.renville.mn.us

Web site: www.co.renville.mn.us

ECRWSS

Postal Customer

PRSRT STD
ECRWSS
U.S. POSTAGE
PAID
EDDM RETAIL



HOUSING & ECONOMIC DEVELOPMENT NEWS

500 E Depue • Olivia, MN 56277 • (320) 523-3656 • www.renville.com

Summer 2014

Issue 2

Volume 13

RENVILLE COUNTY HOUSING & ECONOMIC DEVELOPMENT AUTHORITY

VISION & MISSION

The Renville County Housing and Redevelopment Authority and the Economic Development Authority make up the HRA/EDA. The two authorities' staff and board have developed vision and mission statements to guide their work for Renville County citizens.

The HRA/EDA Vision is:

"To be one of the first counties that people think of when they want to live, work or grow a business in rural Minnesota."

The HRA/EDA Mission is:

"To provide a powerful platform of economic resources that Renville County residents, communities and businesses can build on to reach their full potential."

Together the HRA/EDA coordinates and administers housing programs and expands and enhances economic development opportunities in Renville County. In addition, the agency promotes tourism, recreation, community events, agricultural and renewable energy endeavors and education. The Renville County HRA/EDA also provides its residents with Home Improvement Loans, Down Payment Assistance, Business Revolving Loan Funds, Business Assistance and Development, and Grant Research opportunities.

The Renville County HRA/EDA is governed by a board with members from each of the county's five districts. Board meetings are open to the public and typically held on the 4th Thursday of the month at the Renville County Government Services Center. The HRA/EDA board also directs three office staff positions.



BOARD MEMBERS: (Left - Right)

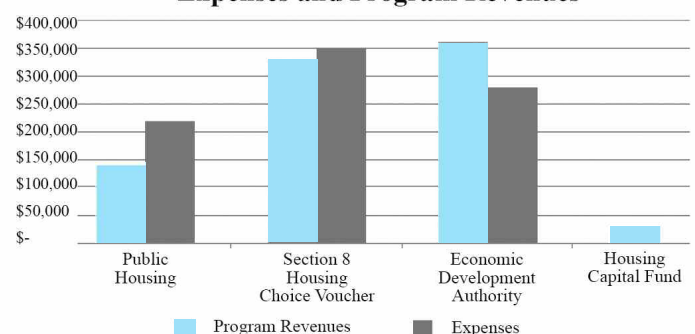
Sandy Housman, Wendy Schwint, Blair Anderson (Vice Chair), Joel Harmoning (Chair), Deb Lingl, Mark Thiesse (Secretary-Treasurer)
(Not pictured County Commissioner Randy Kramer (Ex Officio))

*Thank you to **Chad Kingstrom** for serving on the HRA/EDA board.*

Fiscal 2013 Renville County HRA/EDA Numbers

Total Revenue \$857,956 • Total Expenses \$845,275

Expenses and Program Revenues



Business Revolving Loan Fund:

The Business Revolving Loan Fund (RLF) is a unique and flexible source of supplemental financing for businesses that have a positive economic impact on Renville County. This fund was created to stimulate the economic growth potential in Renville County. RLF funds are awarded for the purpose of creating new permanent jobs or permanently retaining existing jobs to allow businesses to grow and improve the local economy. This program began in the fall of 2009 and as of June 1st, 2014 11 loans have been made to Renville County businesses for a total of \$293,100 and leveraged additional funding of \$911,481 for a total impact of \$1,204,581, retaining 52 jobs and creating 22 new jobs. Interest rates for this gap financing program are typically between 2-5%. The revolving loan fund was capitalized through funds made available by the Renville County Housing & Economic Development Authority and an American Recovery and Reinvestment Act grant from the USDA Rural Business Enterprise Grants (RBEG) Program. If you'd like more information about Renville County's Business Revolving Loan fund, or to schedule a appointment contact:

HRA/EDA Executive Director
Chris Hettig: Call ~ (320)523-3656 or
E-mail ~ chris@mail.renville.com.

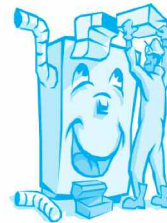


NEWS FROM OUR NEIGHBORS

FRANKLIN: ~ The city of Franklin's construction project including a new well, renovations to the water treatment plant, and water, sanitary sewer, and storm sewer infrastructure improvements are now complete. The KMS Memorial Ride will take place on August 9th. We hope you can join us in Franklin for this great event!



Would Your house like a little TLC?



Do you need a new furnace, or maybe some insulation or windows? Those are just some of the eligible improvements under the Renville County Homeownership Program.

Homeowners in Renville County may qualify for a no-interest loan of up to \$5,000 for half the cost of their home improvement project. Downpayment assistance also available to first time homebuyers.

For more information call Renville County HRA/EDA at 320-523-3656.

Maximum incomes

- 1 person \$41,450
- 2 people \$47,350
- 3 people \$53,300
- 4 people \$59,200
- 5 people \$63,950
- 6 people \$68,650
- 7 people \$73,400
- 8 people \$78,150



Renville County FARMERS' MARKETS

Buffalo Lake Area Farm & Flea Market

Saturdays 8:00am - 12:00pm
 June 7th through the fall
 Buffalo Lake City Park Hwy 212
 For more info: Doug 320-389-1006

Fairfax Farmer's Market

Tuesdays 4-6pm Mid July - September
 1st Street S.E. off Hwy 19 Fairfax
 For more info: Sara 507-426-7222

Hector Farmer's Market

Wednesdays 3-6pm
 July through the fall
 Highway 212 & Co RD 4
 (South Central Grain & Energy C-Store)
 For more info: LaVonne 320-848-2195

Morton Farmers' Market

Fridays 9am-3pm; or sold out
 Mid June through the fall
 City Hall Parking lot (downtown Morton on highway 19)
 For more info: Shirley 507-697-6912

Olivia Farmer's Market

Thursdays 1:30-5:30pm;
 July 10th through October
 City Parking Lot, 9th Street & Fairview
 (two blocks south of the stoplight, South of F & M Bank)
 For more info: Cathy 320-523-1043

Renville Farmer's Market

Sundays Noon-4pm;
 July through October
 Memorial Park Shelter on HWY 212
 For more info: Dawn 320-329-8439

****An assortment of items available includes a variety of Minnesota Grown garden fresh produce from the rich black soil of Renville County. A large assortment of fresh breads, baked goods, canned & pickled items, home-made mittens, crafts, jams, jellies, flowers and lots of vegetables.

Centennial Apartments

161 2nd Avenue East • Franklin, MN



One Bedroom Apartments Rent Based on Income

Waiting List Open

Family Size

- 1
- 2

Income Limits

- \$34,000
- \$38,850



Amenities Include:
 Quiet Atmosphere
 Community Room
 On-Site Laundry
 Elevator
 Smoke-Free Building

Call Linda at (320) 523-3745 or
 888-665-3745 for more information.
 Visit our website at www.renville.com



RENVILLE COUNTY GOVERNMENT SERVICES 2013 Facts

2010 Federal Census Data for Renville County

Total Population 15,730 people • 7,948 Males and 7,782 Females

3,656 are Under Age 18 • 9,029 are Age 18 to 64

3,045 are Over Age 65



Public Health Services

920 Clients Served Through Home Health Care & Family Home Visits

98 Restaurants, Hotels, Pools and Campgrounds Inspected for Health & Safety

751 Vaccinations Administered At School-Located Clinics

667 Pregnant Women, Infants and Children (WIC) Provided with Nutrition Education and Food Vouchers

100% Not Serving Minors Compliance - Resulted from Sponsored Alcohol Beverage Server Training



Human Services

629 Households Received over \$400,000 in Fuel Assistance

47 Homes Licensed to Provide Day Care Services

2,000+ Adults & Children Received Assistance to Pay Medical Bills



Veterans Services

1525 Registered County Veterans Served

\$6,252,000 in Federal and State Benefits Received

522 Local Veterans Served in Veteran Clinics & Hospitals

40,000 Accident Free Miles Transported 300 Veterans to VA Hospitals



License Bureau

1720 New & Renewal Drivers Licenses (Class A, B, C, & D) Processed

133 New Drivers Licenses Under 18 and 124 Instruction Permits Processed

103 New and Renewal Identification Cards Processed

1685 Vehicle Title Transfers Processed

843 New and Out of State Vehicles Licensed

8870 Vehicle Tab Renewals Processed



Food Shelf and Clothing and More

2851 Families Served

202,975 Pounds of Food Distributed

\$89,642.58 Received in Donations



Public Works

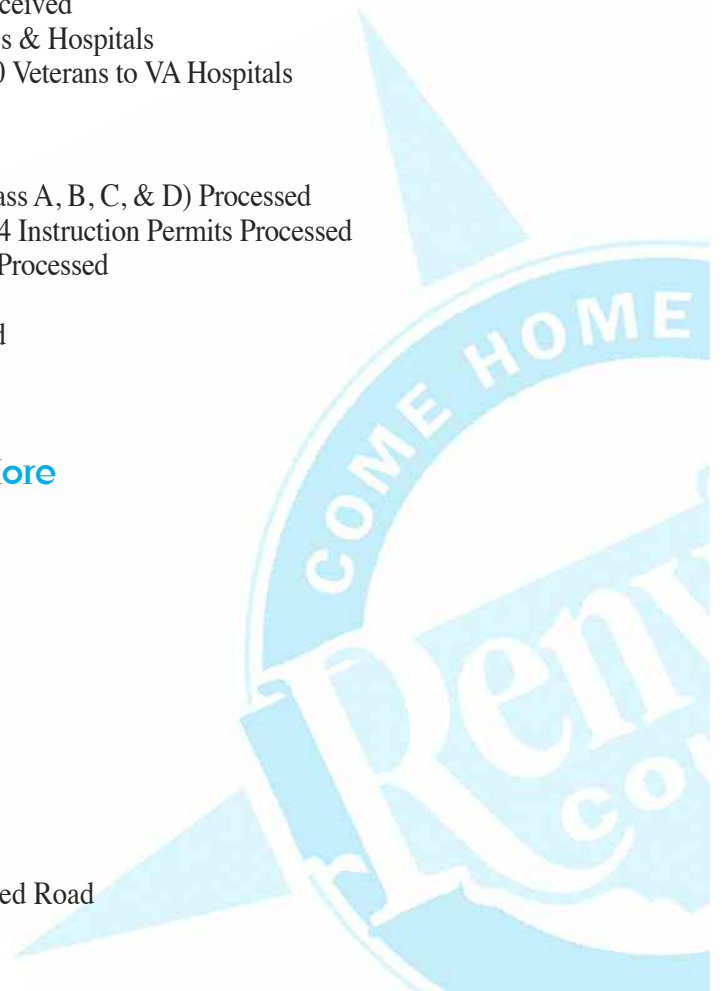
1 Township Bridge Replaced

1 County Road Bridge Replaced

1 CSAH Bridge Replaced

11 Miles Bituminous Overlay Completed

3 Miles Bituminous Paving on Reconstructed Road





Transit and Heartland Express

40,222 Bus Rides Provided
165,667 Total Bus Miles Traveled
2,848 Volunteer Driver Trips Provided
76,667 Total Volunteer Driver Miles Traveled
13 Students Transported To and From MN Valley History Learning Center Program



Environment and Community Development

158 Zoning Permits Issued
64 Septic System Permits Issued
76 Feedlot Inspections Performed



Recorder

3603 Real Estate Documents Recorded
1397 Birth and Death Certificates Issued



Assessor

Maintained 14,129 Real Estate Tax Parcels



Auditor-Treasurer

Tax Collections Assisted in Funding: 27 Townships, 10 Cities, 9 School Districts, 2 Watershed Districts, 6 Rural Service Agencies, Olivia HRA/EDA, County HRA/EDA, Mid-Minnesota, State of Minnesota General Tax, and 75 Ditch Systems



Sheriff Office

6,980 Cases Handled by Renville County Sheriff's Office (RCSO)
5,273 911 Calls Answered by Dispatch Center (77% from Cell Phones)
2 Cities Provided with Contracted Policing - Bird Island and Morton
20,067 Inmate Days in Renville County Jail with an Average Daily Population of 55 Inmates
Boarded Inmates for McLeod, Redwood, Sibley, Swift Counties, and US Bureau of Prisons
570 Pounds of Medications Collected through Prescription Drug Take Back Program – Established In 2012 and Added Collection Sites in Cities of Renville and Fairfax
Added K-9 Program with a 2 Year Old German Shepherd Trained in Narcotics Detection, Human Odor Tracking and Suspect Apprehension



University of Minnesota Extension - 4-H Program

167 Community Club Members
95 Summer Enrichment Program Members
34 After School Program Members
55 Adult Volunteers