

Renville County 150th Anniversary 1866-2016

Volume 15



Renville County
Public Health
Prevent. Promote. Protect.

Summer 2016
Issue 2

August 9th
Commissioner Board
Meeting held in Courthouse

August 10th - 12th
County Fair - Visit Renville Historical
Society and Government displays

August 20th
★ East Loop Historic Bus Tour

September 11th, 1:30pm - 4:30pm
Grand Celebration at Courthouse

October 1st
★ West Loop Historic Bus Tour



Renville County Celebrates 150th Anniversary 1866-2016 & Public Health Celebrates 100th Anniversary 1916-2016

You are invited to join the Renville County Commissioners, County employees, and the Renville County Historical Society to celebrate the 150th Anniversary of Renville County and the 100th Anniversary of Renville County Public Health. There will be several events throughout the summer and fall to commemorate this momentous year.

Plan to visit the *Renville County Historical Society and Renville County Government displays at the Renville County Fair from August 10th through 12th*. Join the Commissioners when they hold a County Board meeting in the former County Commissioner room located in the Courthouse at the Morton granite table used for commissioner meetings from 1903 to 1980 on August 9th.

Two guided bus tours of the County's historical sites are planned for August 20th and October 1st. The August 20th bus tour will begin in Olivia at the Courthouse parking lot and will travel east along Highway 212 with stops in Hector, a drive around Lake Allie, then south with lunch and a tour of Swedlanda Lutheran Church, stops at the Fairfax Railroad Depot, Stagecoach Stop in Camp Township, the Birch Coulee Battlefield, and Renville County Museum in Morton. *The October 1st bus tour* will begin in Olivia at the Courthouse parking lot and will travel west on Highway 212 with stops at the Danube Depot, Renville Museum, Sacred Heart Museum, then south to Skalbekken County Park, and many sites along the Minnesota River Scenic byway with lunch at Vicksburg County Park, Beaver Falls County Park and Bechyn. Comfortable coach buses will be used for the tours and a lunch will be served midway with a *tour cost of \$20.00* per participant. The tours will begin with check in at 8:15 am at the Courthouse parking lot in Olivia and will return to the Courthouse at the end of the tour at approximately 4:30 pm.

CONTINUES ON NEXT PAGE

You must make reservations for the August 20th bus tour by August 15th and for the October 1 bus tour by September 26th. Reservations and payments may be made online at the Renville County website at:
<http://www.renvillecountymn.com> - (A convenience fee will be charged when paying by credit card) or in person at the Renville County Recorder's office located on the second floor in the Courthouse in Olivia.

A celebration will be held on **Sunday, September 11th from 1:30 pm to 4:30 pm at the Courthouse** with a special program, tours, refreshments, and entertainment to commemorate the special anniversaries. For more details follow the Celebration Events on the 150th and 100th Anniversaries at the county's website at www.renvillecountymn.com and on our Facebook pages at <https://www.facebook.com/renvillecountymn150/> and https://www.facebook.com/RenvilleCountyPublicHealth/?ref=aym_t_homepage_panel

Our Facebook pages include historical pictures, facts, and stories. If you have a picture and a related story that you would like to share on Facebook and with the Renville County Museum contact Nicole Elzenga, Renville County Historical Society Executive Director by phone 507.697.6147 or email info@renvillecountyhistory.com or contact Gail Miller, Renville County Recorder by phone 320-523-3669 or email gailm@renvillecountymn.com.

The pictures on the right are some of the stops that will be included on the historic bus tours.



Joseph Brown Ruins



Stagecoach Stop



Schwandt Memorial



Fairfax Train Depot

Public Works Notice to Citizens

Renville County 2016 Road Construction Closures



- Renville CSAH 10 between the MN River and US 212 – Hawk Creek Township
- Renville CSAH 13 between CSAH 17 & US 212 – Troy Township
- Renville CSAH 16 between CSAH 2 & CSAH 4 – Bandon/Palmyra Townships

These sections of roadway are planned to be closed from July 5th through the end of August. Local access will be available throughout the duration of these projects. All these roads will be full depth reclamation & paving projects. The finished product will be a new paved surface and built to 10-Ton per axle standards.

- Renville CSAH 11 between CSAH 5 & CSAH 16

This section of roadway is currently closed and under construction. This section of roadway is being widened & regraded. The finished product will be a 10-Ton per axle road similar to CSAH 11 east of CSAH 16. We expect the road to be back open to traffic by mid-August. The road will be a gravel surface for the fall and winter with the paving scheduled to be completed during the summer of 2017.

Please see the Renville County Public Works section of the County's website for more details at http://www.renvillecountymn.com/departments/public_works/index.php or for questions regarding these construction projects please call the Renville County Public Works office at (320) 523-3759.



New Minnesota Law: Requires Proof of Insurance

If you are registering, renewing license tabs or transferring ownership of motor vehicles and motorcycles you will need to provide insurance information under a law change that took effect on January 1, 2016. The Minnesota

Legislature changed state law during the 2015 session to require insurance information for vehicle registration. Prior to the law change, owners were required only to attest that they had motor vehicle or motorcycle insurance.

The law change now requires owners to provide the following information when registering, renewing license tabs or transferring ownership of motor vehicles and or motorcycles:

- Name of Insurance Company
- Policy Number
- Expiration Date of the Insurance Policy

The Minnesota Department of Public Safety Driver and Vehicle Services is notifying vehicle owners of the new requirement on all 2016 renewal notices. The legislature changed the law based on a recommendation from the Motor Vehicle Insurance Task Force to reduce the number of people driving without insurance. The task force discovered in their research leading up to making the recommendation that an estimated 10.8 % of Minnesotans drive without insurance. Minnesota law requires drivers to possess proof of insurance at all times and maintain insurance when a vehicle is operated or when its use is contemplated.

If you have questions you should contact the local Renville County License Bureau by phone at 320-523-3612 or email licenses@renvillecountymn.com.

2016 MN ELECTION DATES

Primary Election

~ Tuesday, August 9, 2016 ~

General Election

~ Tuesday, November 8, 2016 ~

LOCAL OFFICES ON GENERAL ELECTION BALLOTS STATEWIDE:

- County Commissioner
- City Officers
- Soil & Water Conservation District Supervisors
- Township Board Members
- School Board/Referendum
- Constitutional Amendments

OFFICES ON GENERAL ELECTION BALLOTS STATEWIDE:

- U.S. President & Vice President
- U.S. Representative
- State Senator
- State Representative



COUNTY FAIR

Visit Renville County and Historical Society's Booths and learn about the past 150 years of the County.

AUGUST 10th - 12th

Take in the Food, Rides and Grandstand featuring:
• Bulls and Barrels • Antique Tractor Pull • Demo Derby

See you at the Fair!



Reflections of a Public Health Nurse

By Jill Bruns, PHN

homes, clinics, communities, congregate housing, and with civic groups, concerned citizens and churches. We are a “team” with others including teachers, other nurses, mental health workers, hospitals, nursing homes, doctors, social workers, emergency workers and attorneys.

My job has brought me face to face with child abuse and neglect. I have seen the tears of a scared mother trying to understand why the doctor and social worker are concerned about her baby. Public Health Nurses have spent many visits and many hours with mothers trying to teach them that Kool-aid and mashed potatoes are not appropriate food for a four-month-old, and that babies need to be kept clean and dry...cuddled and loved.

I have seen the successes in our job – the 15-year-old child-mother who grows into a responsible young adult with a healthy and happy child; the increase in early detections of some cancers from screening programs, education and aggressive medical treatment; the decrease in abortion rates and unwanted pregnancies with family planning programs; early identification and intervention of children with developmental problems that show remarkable outcomes.

I have seen the paperwork increase to astronomical proportions because of budget cutbacks and efforts to reduce the high cost of health care. Some days seem to be filled with nothing but telephone calls and computer work, involving referral information, prior authorization, and filling out proper forms. The County Board of Commissioners must constantly be given facts to make good decisions about programs and services

people need and want, and at the same time trying to keep a balanced budget.

On those days when I feel that most of my time is taken up with reading e-mails and pushing papers, I can look back with a sense of accomplishment at some of the families I have helped. One case involved in elderly couple living on an isolated farm place. Their pastor called and was concerned. When I arrived, I saw daylight through the walls and gaping holes in the floor. There was evidence of rodents and papers and garbage were piled high in corners. The woman, dressed in multiple layers of dirty clothing for warmth, was bent in a 90 degree angle from arthritis. Her husband, she said, was in bed. He had fallen from the tractor when helping their 50-year-old handicapped son try to manage the farm. Grandpa was in bed, in his oil-stained overalls and soaked with urine and BM. His beard was long and full of fleas. His cheeks were sunken and every movement brought pain. Intervention was necessary. The son cried as the ambulance took his father to the hospital. I became their advocate because they had no other resources. While acting as a liaison in finding a physician, monitoring their physical status, and taking care of their basic needs, I also arranged for better housing and helped get the son into a program to help him reach his potential. They were able to make a fair recovery and stay in their community for several years.

Yes, every day has its challenges, its rewards and its frustrations. Yet, of all the situations I have encountered, I have not gotten lost, even once, on a small country road.

When I moved back to the “country”, I knew I wanted to do public health nursing. I had worked in a hospital for a while, but had no real picture of the wide variety of people, programs, and responsibilities a small public agency takes on.

One of my biggest fears was getting lost on some small country road. I soon found that rural home visiting has hazards beyond getting lost. I have been chased by a pig and bitten by a dog. A paranoid woman pulled a gun on me. I have shoveled a driveway in the middle of a snowstorm to get to a home visit, and had my car sink bumper-deep in the early spring mud on some farmyards. Colleagues have trudged through knee-deep snowdrifts and flooded roads to get to client’s houses.

Our job varies from providing a citizen with information on West Nile Virus, to assisting the sheriff and social worker in determining the vulnerability of a woman whose house is filled to the ceiling in paper and litter. We work in communities to prevent youth from using tobacco, and to eat well and get exercise. We do surveillance of diseases. Recently, Public Health has been recognized for our part in bioterrorism preparedness. Our agency works in schools,

Renville County

500 E. DePue Ave.
Olivia, MN 56277

Phone: 320-523-3710

Email: saraf@renvillecountymn.com

Web site: www.renvillecountymn.com

ECRWSS

Postal Customer

PRSRT STD
ECRWSS
U.S. POSTAGE
PAID
EDDM RETAIL



Renville County 150th Anniversary 1866-2016

CONNECTING YOU WITH YOUR COUNTY GOVERNMENT

A Look at Renville County's Railroads Yesterday & Today



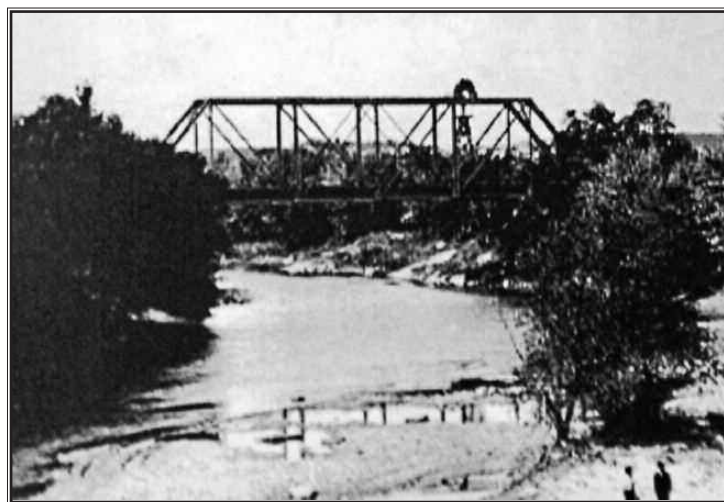
Early Locomotive

Railroads played a major role in the development of our country. The first US tracks were laid in 1820. Likewise, railroads were an important factor in the progress of Renville County. Railroads have been used for transporting people, delivering goods, hauling commodities and providing jobs. Towns have appeared and disappeared because of the railroads. Rails first crossed the northern portion of Renville County in 1878. The northern line eventually became part of the Chicago, Milwaukee and St Paul Railroad. Four years later, in 1882, the Wisconsin, Minnesota and Pacific line extended from Winthrop through Fairfax, Franklin and Morton along the southern part of the county. Then in 1894 this same line extended from Morton northwest through Redwood County and beyond. The southern railroad line was purchased by Minneapolis and St Louis Railroad in 1899, which was later absorbed by the Chicago Great Western Railway Company.

The impact of the railroad can be realized by looking at a map of Renville County. All ten towns in the county are located on an active rail line. There were several small villages that were

scattered about the county that did not survive and those locales didn't have a rail line. When trains became a primary mode of transportation people relied less on river and horse transportation and began moving closer to towns with accessibility to trains. The railroads played a major role in where our towns are located and how our towns are laid out. The towns had a track with a nearby passenger depot, freight house, grain elevator, and commercial street.

The railroads provided many jobs and spin-off businesses for Renville County residents. Hotels, restaurants, and retail businesses of all kinds benefited from rail traffic and rail workers. Local dray lines provided opportunities for local entrepreneurs to thrive. Dray lines operated for several years and provided a great service for the county. In the early years, they hauled freight from the depot to the local stores. They hauled coal to homes and business, and they hauled ice that had been harvested from local rivers, lakes and ponds.



Railroad Bridge over Minnesota River near Morton

Rail workers were responsible for carrying out the promises of the rail companies and making this mode of transportation a success.

The railroad also revolutionized production agriculture. Before the train, agriculture was a local enterprise and farmers grew what local needs demanded. The train opened up world markets to local farmers. Today, large amounts of profitable crops are grown to meet global demands.

As with any mode of transportation there are accidents and for railroads and rail cars there have been many train wrecks. One of the most famous train wrecks occurred on November 15, 1925 between Renville and Sacred Heart. The Flyer passenger train called Columbia was on its way to the Pacific Northwest. A dual engine freight train heading east towards Minneapolis was supposed to wait at the O'Connor siding, but due to bad communication, was given the "all clear" to proceed. According to accounts of the wreck, "the trains met at top speed with major force. One of the trains was tossed from the tracks." Both engineers were killed instantly along with a mail clerk and a conductor. There were no passenger deaths. However, there were several travelers that had broken bones and internal injuries. Fortunately, a doctor from Montevideo and a nurse from Montana were on board at the time. They set up a makeshift clinic to treat the injured passengers. Following the wreck, cranes and laborers had to clear the wreckage and build the tracks back up to get back on schedule again.

The southern line was abandoned by Chicago and North Western in 1982. The Minnesota Valley Regional Railroad Authority (MVRAA) was formed and acquired the tracks shortly thereafter. The MVRAA was created by Carver, Renville, Redwood, Sibley and Yellow Medicine counties. The southern short-line railroad track is currently owned by the MVRAA and is operated by the Minnesota Prairie Line, a subsidiary of the Twin Cities and Western Railroad. The northern line has been operated by the Twin Cities and Western Railroad since 1991. The railroad lines still play a vital role in our county's agriculture success. Two of the original train depots are still in place in Fairfax and Danube next to the railroad tracks and will be stops along the **150th Historic Bus tours** to be held in **August** and **October**. For more details on the tours see page 1 of the Messenger.

(Sources for this article include: Railroads of Renville County Historical Society, History of Renville County Vol. 1 & 2; www.tcw.net/mpl/; and www.mvrta.org.) Photographs courtesy of the Renville County Historical Society and Museum.



Historic Morton Hotel



1925 Train Wreck



1925 Train Wreck



HOUSING & ECONOMIC DEVELOPMENT NEWS

105 South 5th Street, Suite 318 • Olivia, MN 56277 • (320) 523-3812 • www.renville.com

Summer 2016

Issue 2

Volume 15

Innovative Steps Taken by the EDA

The Renville County Economic Development Authority (EDA) saw major staff changes in 2015. Those changes are now being realized within the community and in the programming that the department is offering. The inception of both the Business Innovation Grant and the Community Impact Funds was an exciting step in a different direction for the EDA. The Business Innovation Grant (BIG) program awarded the first grants in May to Renville County businesses. A total of \$10,000 in grant awards went to the following businesses: Rehab Wraps, McLagan Daycare, Osceola

Township, AEI and the Red Door Kennel. Congratulations to each of the recipients! The funds provided by the BIG program included a commercial printer purchase, facade updates, resurfacing of an outdoor recreation area, handicap accessibility, and a building expansion. The Community Impact Funds were also awarded for the first time in May in the amount of \$4,000 to assist four communities in Renville County. These grants will be assisting Renville, Danube, Bird Island and Franklin with a variety of projects, including a main street revitalization project, the removal of blighted property, an engineering study and upgrades to a park shelter. In total these grant dollars helped leverage an additional \$150,000 for Renville County projects.

After years of discussions regarding the spending of reserve funds, the EDA took a bold step forward and awarded two additional grants. The Renville County Agriculture and Renewable Energy Committee of the Renville County EDA has awarded a \$13,000 grant to United Acres, a large scale educational community garden located in Olivia. An additional grant in the amount of \$15,000 was



Renville County HRA/EDA Board members and EDA staff present Franklin Industries with a grant for a new daycare center in Franklin. Left to right: Wendy Schwint(Bd), Sandy Housman(Bd), Janette Wertish(Bd), Scott Nissen(Franklin Industries), Brian Pederson(Franklin Industries), Joel Harmoning(Bd), Susie Lang(Staff), Carrie Tersteeg(Staff) and Blair Anderson(Bd).

awarded to Franklin Industries for the construction of a building that will be home to a community center and a new daycare facility in Franklin. The EDA is proud to partner with the many volunteers working on both the garden and the daycare center. "We are in awe of these innovative projects, the creative thinking involved and the way that the inadequacies of access to fresh foods and child care availability are being turned into opportunities" says Economic Development Coordinator Susie Lang.

The Renville County EDA Board is always looking to partner on projects that have great impact on our communities and its residents. The EDA staff is in the process of creating a grant and loan request packet that will make the process of requesting funds from the EDA more straight forward. Once this packet is completed it will be available on the EDA's web site, newsletter and Facebook page. *As always please contact the EDA if you'd like to discuss a project, explore ideas regarding funding and to get signed up to receive the EDA's monthly e-newsletter by calling 320-523-3656 or by e-mailing Susie at susiel@renvillecountymn.com.*

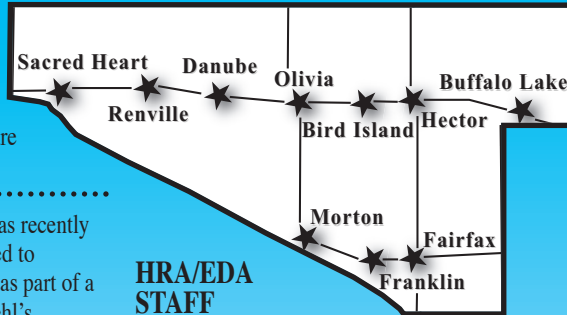
NEWS FROM OUR NEIGHBORS

FRANKLIN ~ The 41st Annual Catfish Derby Days will be held July 22-24. Come to Franklin for a fun-filled weekend! Franklin Industries is beginning construction of a new Day Care and Community Center Facility.

RENVILLE ~ The City of Renville was recently awarded a Community Impact Grant used to purchase benches and a trash receptacle as part of a mainstreet project. A new business, Keehl's Kreations, is coming to town and will be located at 326 East Park Avenue. RCW's expansion project will be completed this fall to include additional classrooms and a new gymnasium. Renville Health Services is adding a Pub Room for its residents. Hinderks Chiropractic is completing an expansion project that will include the addition of a physiotherapy bay, a new massage room and a private consultation area.

EVENTS ~

July 18-24 Buffalo Lake Days, Buffalo Lake
July 19 4-H Golf Tournament, Mayflower Country Club
July 22-24 Catfish Derby Days, Franklin
July 25-31 Corn Capital Days, Olivia
August 5 Renville County Relay for Life, Olivia
August 10-12 Renville County Fair, Bird Island
August 13 KMS Memorial Ride, Franklin
August 14 Czech Heritage Festival, Bechyn
September 18 Hector Fly-In, Hector Municipal Airport



HRA/EDA STAFF MEMBERS

Susie Lang, HRA/EDA Development Coordinator
 Carrie Tersteeg, Administrative Assistant
 Ron Louisiana, Maintenance
 Housing Contacts: Amanda Hillmer, Pat Dingels

HRA/EDA BOARD

Joel Harmoning, Chair, District 2
 Deb Lingl, Vice-Chair, District 3
 Mark Thiesse, Secretary-Treasurer, District 4
 Sandy Housman, District 1
 Janette Wertish, District 5
 Blair Anderson, Board at-Large
 Wendy Schwint, Board At-Large
 Randy Kramer, Ex Officio

ECONOMIC DEVELOPMENT REVOLVING LOAN FUND

The Business Revolving Loan Fund is a unique and flexible source of supplemental financing for businesses that have a positive economic impact on Renville County.

INTEREST RATES AS LOW AS 2 %!

Building & Plant Renovations

Energy Efficiency Upgrades

Permanently Retaining Existing Jobs

Creating New Permanent Jobs

Working Capital Loans

Start-up

For more info contact, **Susie Lang**,
 Renville County HRA/EDA.

Phone: (320) 523-3837 or E-Mail:
susiel@renvillecountymn.com

Funds made available by the Renville County Housing & Economic Development Authority, The American Recovery & Reinvestment Act, & a grant from the USDA Rural Business Enterprise Grants (RBEG) Program.



Would Your house like a little TLC?

Do you need a new furnace, or maybe some insulation or windows? Those are just some of the eligible improvements under the Renville County Home Ownership & Rehab Program. Homeowners in Renville County may qualify for a no-interest loan of up to \$5,000 for half the cost of their home improvement project. Downpayment assistance also available to first time homebuyers.

Maximum incomes

1 person	\$59,606
2 people	\$68,131
3 people	\$76,656
4 people	\$85,113
5 people	\$91,919
6 people	\$98,794
7 people	\$105,600
8 people	\$112,406



Susie: susiel@renvillecountymn.com
or (320) 523-3837



Buffalo Lake Area Farm & Flea Market

Saturdays 8:00am-Noon
 June 11th through the fall
 Buffalo Lake City Park Hwy 212
 For more info: Doug 320-389-1006

Fairfax Farmer's Market

Tuesdays 4pm Mid June-September
 1st Street S.E. off Hwy 19 Fairfax
 For more info: Sara 507-426-7222

Hector Farmer's Market

Wednesdays 3-6pm
 July through the fall
 Highway 212 & Co RD 4
 (South Central Grain & Energy C-Store)
 For more info: LaVonne 320-848-2195

Olivia Farmer's Market

Thursdays 1:30-5:30pm
 July 14th through October
 City Parking Lot, 9th Street & Fairview
 (2 blocks south of the stoplight, South of F&M Bank)
 For more info: Cathy 320-522-1043

Morton Farmer's Market

Days & times will vary, Please call for schedule
 Mid June through the fall
 City Hall Parking Lot (Downtown Morton on HWY 19)
 For more info: Shirley 507-697-6912

****An assortment of items available includes a variety of Minnesota Grown garden fresh produce from the rich black soil of Renville County. A large assortment of fresh breads, baked goods, canned & pickled items, homemade mittens, crafts, jams, jellies, flowers and lots of vegetables.



RENVILLE COUNTY GOVERNMENT SERVICES 2015 Facts

2010 Federal Census Data for Renville County

Total Population 15,730 people • 7,948 Males and 7,782 Females

3,656 are Under Age 18 • 9,029 are Age 18 to 64

3,045 are Over Age 65



Public Health Services

272 Parents of infants and children received 1,187 family home visits for parenting support
Tobacco Licensing Ordinance updated to assure more training for clerks and limit minor sales
84 Restaurants, Hotels, Pools and Campgrounds were inspected for health and safety
2,388 Home Health Care Visits provided & 1,951 Case Management Visits for Elderly & Disabled
880 Seasonal Flu Vaccinations administered primarily at schools - located clinics



Human Services

573 Households Received Over \$385,000 in Fuel Assistance
297 Child Protection Reports Acted on
45 Homes Licensed for Day Care Services
3,000+ Children and Adults Received Assistance to Pay Medical Bills
\$2,036,085 in Child Support Collected and Distributed



Veterans Services

1,680 Renville County and Surrounding Area Registered Veterans Served
\$13,095,595 in State and Federal Veterans Benefits Received for Renville County Veterans
464 Local Veterans Served in Veterans Clinics and Hospitals



License Bureau

2,405 New & Renewal of Driver's License-Instruction Permits & Identification Cards Processed
14,907 Motor Vehicle Transactions Processed (New & New to State Vehicles - Transfers & Registration Renewals)
163 Game and Fish Transactions Processed
868 DNR Transactions Processed



Renville County Food Shelf

2,709 Families Served Including 8,769 Individuals
204,644 Pounds of Food Distributed
\$62,601.16 Received in Donations



Public Works

1 Township Bridge Replaced (Camp/Bandon Township)
6.5 Miles Mill & Bituminous Overlay Completed (CR 74 & CSAH 3)
5.5 Miles Full Depth Reclaim & Bituminous Paving Completed (CSAH 16)
4.5 Miles Bituminous Paving to Complete 2014 Reconstruction (CR 74 & CSAH 2)





County Attorney

705 Cases Processed Including 473 Criminal, 40 Chips, 13 Guardianships, 129 Child Support, 12 Civil, 13 Commitment, and 25 Other



Environment & Community Development

113 Zoning Permits Issued
43 Septic System Permits Issued
85 Feedlot Inspections Performed



Recorder

3,295 Real Estate Documents Recorded
1,744 Birth and Death Records Issued



Assessor

14,189 Real Estate Parcels Maintained for 611,665 Deeded Acres (Not including city properties)
\$5,310,470,500 Estimated Market Value
\$4,439,345,100 Tillable Value for 529,903 Tillable Acres



Auditor-Treasurer

Tax Collections Assisted in Funding: 27 Townships, 10 Cities, 9 School Districts, 2 Watershed Districts, 8 Rural Service Districts, Olivia HRA/EDA, County HRA/EDA, Mid-Minnesota, State of Minnesota General Tax, and 76 Ditch Systems



Sheriff Office

6,835 Cases Handled by Renville County Sheriff Office - 18.73 Events/Day
2 Cities - Morton and Bird Island Provided with Contracted Policing (Added Sacred Heart & Franklin in 2016)
5,322 911 Calls Answered by Dispatch = 4,543 Cell Phones (85%) & 779 Land Lines (15%)
25,408 Inmate Days in Renville County Jail with Average Daily population of 69.6 Inmates (Boarded Inmates for Redwood, McLeod and other neighboring counties; MN Dept of Corrections and Federal Bureau of Prisons)
344 Pounds of Medication Collected from Drop-off Locations in Olivia, Fairfax and Renville
Additional drop offs added in Morton and Bird Island for 2016 1,217 pounds collected since program began)



University of Minnesota Extension - 4-H Program

183 Community Club Members
144 Summer Enrichment Program Members
69 After-School Program Members
59 Screened, Adult Volunteers

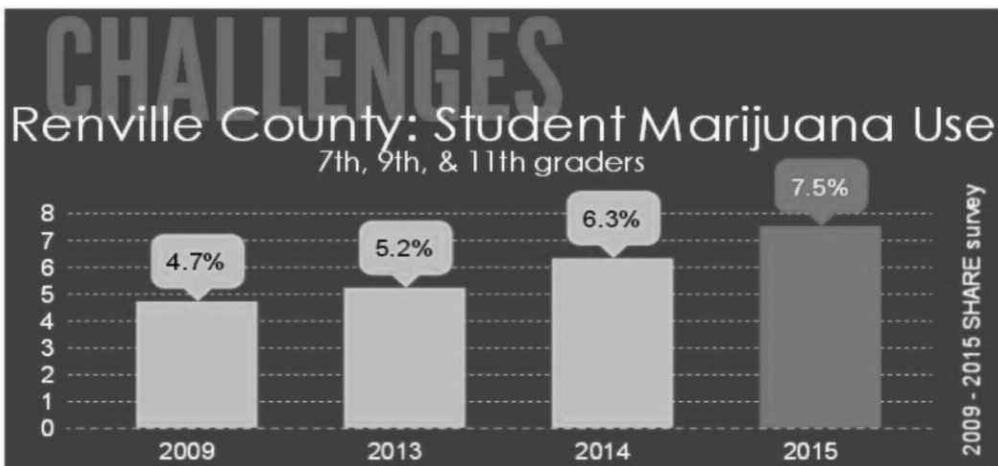


Water and Household Hazardous Waste (HHW)

\$154,372 Processed for 14 Low-Interest Septic Loans
\$50,502.54 Processed for 4 Low-Interest Well Loans



BY THE NUMB3RS



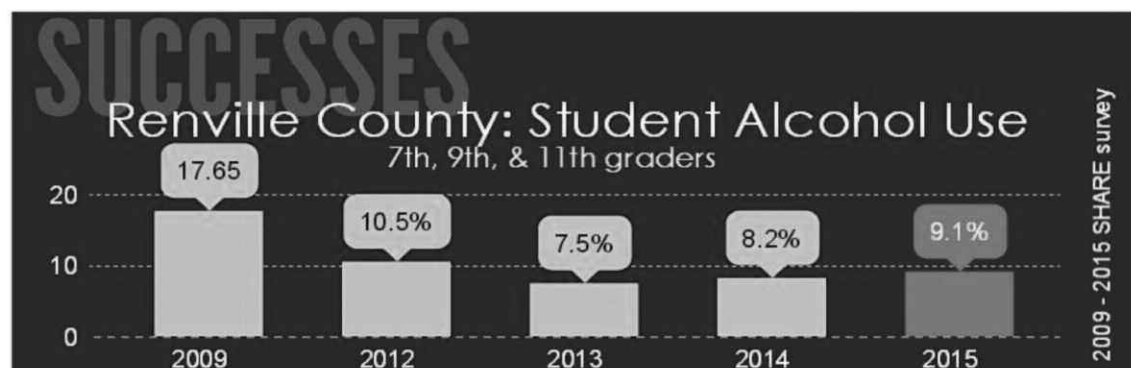
ONLY **55.5%**
of Renville 11th
graders say smoking
pot is harmful

Renville county
students who took
the 2015 PACT for
Families

789

SHARE Survey,
identifying
student needs
and concerns

97.8%
of 7th graders
reported
NOT drinking in
the last 30 days



5% fewer
students
smoke now
than they did
in 2012

RAPAD wins the
Minnesota
Prevention
"Prepared and
Aware" Award

2015

please call us to learn
more, get involved,
or join us at our
monthly meetings

320.523.3845



Established in 2006, RAPAD is a community coalition working to reduce underage substance use among youth in Renville County. RAPAD is funded by a federal Drug Free Communities grant, along with matching funds from the community to help make community changes. Some accomplishments include:

Youth/Schools

- Substance use prevention curriculum taught in four school districts to 6th – 10th grade
- Youth Groups as branches of the coalition formed in school districts around the county creating awareness about underage substance use with Red Ribbon Week, National Drug Facts Week, SAMHSA “I Choose” Project, Above the Influence.
- Youth Leadership Trainings annually
- Sticker Shock- Youth groups attach stickers that describe consequences of purchasing and providing alcohol to minors on boxes of beer, wine and other alcohol at stores
- Full assembly School Prevention Speakers- Project Footsteps, Rock In Prevention, Teen Outreach

Media

- Positive Community Norms Media Campaign-“MOST Of Us Don’t Drink & Drive”
- RAPAD Website---www.rapad.org; RAPAD Facebook page....Like us  Find us on Facebook
- Local Access Channel TV ads Renville, Olivia, Morton
- Prevention Radio Ads-Lakeland Broadcasting with youth

Evaluation

- SHARE Student Survey-Annual in all school districts identifying student needs and concerns around substance use
- MN Student Survey- Every 3 years
- Parent Survey- English & Spanish
- Coalition Member Survey

Policy

- Renville County Tobacco Ordinance Amendment Aug. 2015 to include:
 - Minimum price on cigars at \$2.10
 - Sales prohibited by Pharmacies
 - Education requirements for all employees of tobacco licensee 1000 ft proximity to youth-oriented facilities
 - Increased Administrative penalties for failing compliance checks
 - No Sampling /Vaping tobacco indoors
- Tobacco Free Parks policy passed in Olivia, including E-Cigarettes (2016)
- Social Host Ordinance passed at county level and nine other cities

Enforcement

- Alcohol Compliance Checks have dramatically improved from only 50% compliance in 2009 to 100% passing in 2014
- Tobacco Compliance Checks results has improved from 75% failure in 2004 to 90% passing 2015

Trainings/Programs

- Responsible Beverage Server Training and Special Event Training conducted for free to all establishments serving or selling alcohol in the county (2008- present)
- Training for coalition/community members at Program Sharing and annual CADCA trainings
- Town Hall Meetings with youth groups addressing underage substance use
- Diversion Program for youth first time offenders(2010)
- Medication Disposal Program Olivia, Renville, Buffalo Lake, Morton, Fairfax