



Vicksburg County Park
Photo Credit: Brian and Lynette Bloomquist

Issue Snapshot:

- Renville County Farmer's Markets.....Page 2
- Supplemental Nutrition Assistance Program.....Page 3
- 4-H Celebrates 100 Years in Renville County.....Page 4
- Meet Restorative Justice Volunteer Annie Tepfer.....Page 4
- 2021 Renville County Community Events Calendar.....Page 6
- Renville County Parks: Trail Enhancement Project.....Page 7
- RRRSWA: More Than A Recycling Facility.....Page 8
- Soil Health Event.....Page 9
- Minnesota Well Index.....Page 9
- Low-Interest Well and Septic Loan Programs.....Page 9
- Tire Collection.....Page 10
- Pesticide Container Collection.....Page 11
- COVID-19 Vaccinations.....Page 12
- Make Your Renville County Park Reservations.....Page 12

Renville County Bids Farewell to Long-Time Public Health Director/CHS Administrator Jill Brun

Jill Brun began her career with Renville County in 1984 as the Public Health Director. Within a few years, her role was combined with Community Health Services (CHS) Administrator for the Redwood-Renville Community Health Board and later the Kandiyohi-Renville Community Health Board.

In her current role as Public Health Director/CHS Administrator, Jill directs programs, manages and develops budgets and strategic plans, prepares reports, evaluates programs and staff for efficiency and effectiveness, and coordinates with other county departments, community organizations, hospitals/clinics, and counties. ***"While I am director, I am also a Public Health***



Nurse and have provided nursing care, like immunizations and home care, over the years." shared Brun.

One of Jill's greatest successes was the first program she launched in 1985 (*with strong support from dairy farmer and former Commissioner Gene Dillon*) which was the Women, Infants and Children (WIC) program.

Other achievements noted were being a founding member of several systems with lasting impacts, including:

- Renville County Hospice
- Southwest Immunization Registry (*Now the Minnesota Immunization Information Connections or MIIC*)
- Putting All Communities Together (*PACT for Families Collaborative*)
- PrimeWest Health
- Supporting Hands Nurse Family Partnership
- Statewide Health Improvement Partnership (*SHIP*)



Jill Brun



Jill Brunns (right) posing with her successor, Sara Benson, who began her new role as Renville County Public Health Director on June 12.

"The accomplishments in my career are the result of a team of local, regional and state Public Health professionals. The professionals that I worked with were top-notch, as evidence by the lasting impacts on individuals, families, and communities throughout my tenure. The fact that, together, we have made a difference is my greatest accomplishment." commented Brunns.

When asked about the greatest challenges during her tenure, Jill noted the time when Public Health was suddenly in the spotlight over controversy related to hydrogen sulfide emissions from large hog lagoons. This experience made her realize the importance of consulting with experts, focusing on scientific facts, listening to all sides, keeping policy makers informed, being fluid when new information evolves, and practicing self-care to keep going. These insights helped during COVID-19, when Jill delayed her retirement to work with Public Health staff and partners to get through the worst of the pandemic.

The biggest change that Jill has seen over her 37 career is the recognition that physical health and mental well-being happen where people live, learn, work, play, and worship. ***"While we still provide needed direct service to individuals, our work has changed to focus on creating systems or environments that improve people's health. For instance, tobacco-free laws have improved health more than smoking cessation classes, and understanding early brain development for young children has created programming with greater impact."*** remarked Brunns.

When asked what her plans and dreams for retirement will be, Jill shared that she looks forward to less stress and responsibility. She plans to spend more time with her family including travelling to, and attending, grandchild's activities, visiting friends and family around the world with her husband, and maybe even starting a neighborhood book club. ***"I have always been a morning person and never set an alarm clock. The verdict is still out if my "clock" will change! I anticipate leisurely morning coffee and devotions, followed by exercise, and some daily cleaning routine. Afternoons and evenings will be spent playing piano, gardening, reading, and visiting. Call me in three months to see how this plan is going!"*** shared Brunns.

As Jill bids farewell, she thinks of the advice her grandmother gave to her 45 years ago: Keep your heart pure and life clean, and you will go far, girl! ***"Yes, I get my sassiness from my family!"*** Brunns said. ***"What good advice for us all, to seek to do justice and good work and not to cause harm or get into trouble."***

After her retirement, Jill knows that Public Health professionals will continue to protect, promote, and prevent diseases in our community, region, and state and that future leaders will build on the current foundation. ***"I will miss you all terribly. Know that I am grateful for your help in making my public health journey one that I will always cherish."*** concluded Brunns.

Renville County extends our deepest appreciation to Jill for her years of service and congratulates her on a well-deserved retirement.

2021 Renville COUNTY Farmer's Markets



Buffalo Lake Farmer's Market

Saturdays 8:00 a.m. - Noon
June 5 through Fall
Hwy 212 Wayside Rest (In City Park)
Coordinator: Tracie
320-296-6292

**The Buffalo Lake Flea Market will be held the first Saturday of each month in conjunction with the Farmer's Market.*

Olivia Farmer's Market

Thursdays 1:30 p.m. - 5:30 p.m.
July 8 through September 23
City Parking Lot (9th Street South and East Fairview Avenue)
Coordinator: Cathy
320-522-1043

**Third Thursdays vender event in downtown Olivia (3:00 - 7:00 p.m.) June 17, July 15, August 19 and September 16 in conjunction with the Farmer's Market.*

Fairfax Farmer's Market

Tuesdays starting at 4:00 p.m.
Mid-June through September
1st Street SE (Downtown off Hwy 19)
Coordinator: Lori
507-276-5044

Hector Farmer's Market

Wednesdays 3:00 p.m. - 5:00 p.m.
July through Fall
Hwy 212 and County Road 4
(C-Store Parking Lot)
Coordinator: LaVonne
320-848-2195

Renville County Market

Wednesdays 4:00 p.m. - 7:30 p.m.
June 16 through September 1
Bird Island Cultural Centre
Coordinators:
Rosemary Glesener: 320-365-1011
Leta Jacobs: 320-579-1412

Buy Fresh!
Buy Local!

Supplemental Nutrition Assistance Program (SNAP)

Submitted by Renville County Human Services

What is SNAP?

SNAP provides important nutritional support for low-wage families, low-income seniors and people with disabilities living on fixed incomes, and other individuals and households with low incomes. SNAP is a county-run, state-supervised Federal Program that provides Minnesotans with a monthly financial benefit that helps purchase healthy foods at local grocery and convenience stores, farmers markets, and even online through Walmart and Amazon delivery.

SNAP cannot be used to purchase alcoholic beverages, tobacco products, vitamin supplements, non-food grocery items such as household supplies, or hot foods. The program issues benefits to an Electronic Benefits Transfer (EBT) card, which is used like a debit card.

Who is eligible for SNAP?

Many people, including families, seniors, single adults, children, and immigrant groups are eligible for SNAP. Eligibility is based on the number of people in your household and the household's total income. This includes money from jobs, self-employment, child support, and Social Security income.

How do I apply?

County Human Services agencies accept applications and determine eligibility and benefit levels in accordance with state and federal regulations. To apply, you will be required to complete a Combined Application Form (CAF), which is available by contacting Renville County Human Services at 320-523-2202 to request one be mailed. Paper applications are also available from Renville County Human Services, located in the lobby of the Government Center (105 South 5th Street, Olivia, MN) or from local city offices within Renville County. You may also apply online at applymn.dhs.mn.gov or print an application from the Renville County website at www.renvillecountymn.com or state website at mn.gov/dhs.

Once you submit your application to the Human Services agency, they will send a notice telling you whether you are eligible for benefits within 30 days. During the 30 days, you will need to complete an eligibility interview and give proof of the information you provided. The interview is typically completed by phone. If found eligible, you will receive benefits based on the date you submitted your application to the agency.

If you have questions, please call Renville County Human Services at 320-523-2202.

Renville County HRA: Public Housing and Section 8

If you or someone you know has low or moderate income and is looking for help with the cost of rent, the Renville County HRA may be able to help.



Public Housing: Rental units operated by the HRA, ranging from one to three bedrooms, are located in the communities of Franklin and Sacred Heart.

Housing Choice Voucher Program (Section 8): Clients are able to rent from a private landlord, and the HRA will pay a portion of rent directly to their landlord.

For more information or to place your name on the waiting list, call the Renville County HRA at 507-637-4004.

SNAP Income Guidelines

Number of people	Monthly income before taxes
1	\$1,755
2	\$2,371
3	\$2,987
4	\$3,603
5	\$4,219
6	\$4,835
7	\$5,451
8	\$6,067

For each additional family member above 8 add \$616



CCT's mission is to provide safe, reliable, cost-effective transportation to all residents of Kandiyohi, Renville and Meeker Counties.

SERVICES INCLUDE:

PUBLIC TRANSPORTATION

- Demand Response Rides (Dial-a-Ride)
- Fixed Flexible Route
- Same Day Service
- Saturday and Sunday Service

VOLUNTEER TRANSPORTATION

- Senior Volunteer Program
- Non Emergency Medical Transportation

CCT CARRIAGE TRANSPORTATION

- Transporting groups from long term care facilities, senior living residences, group homes, etc.

Learn More:
www.cctbus.org
320-523-3589

VOLUNTEER DRIVERS NEEDED!

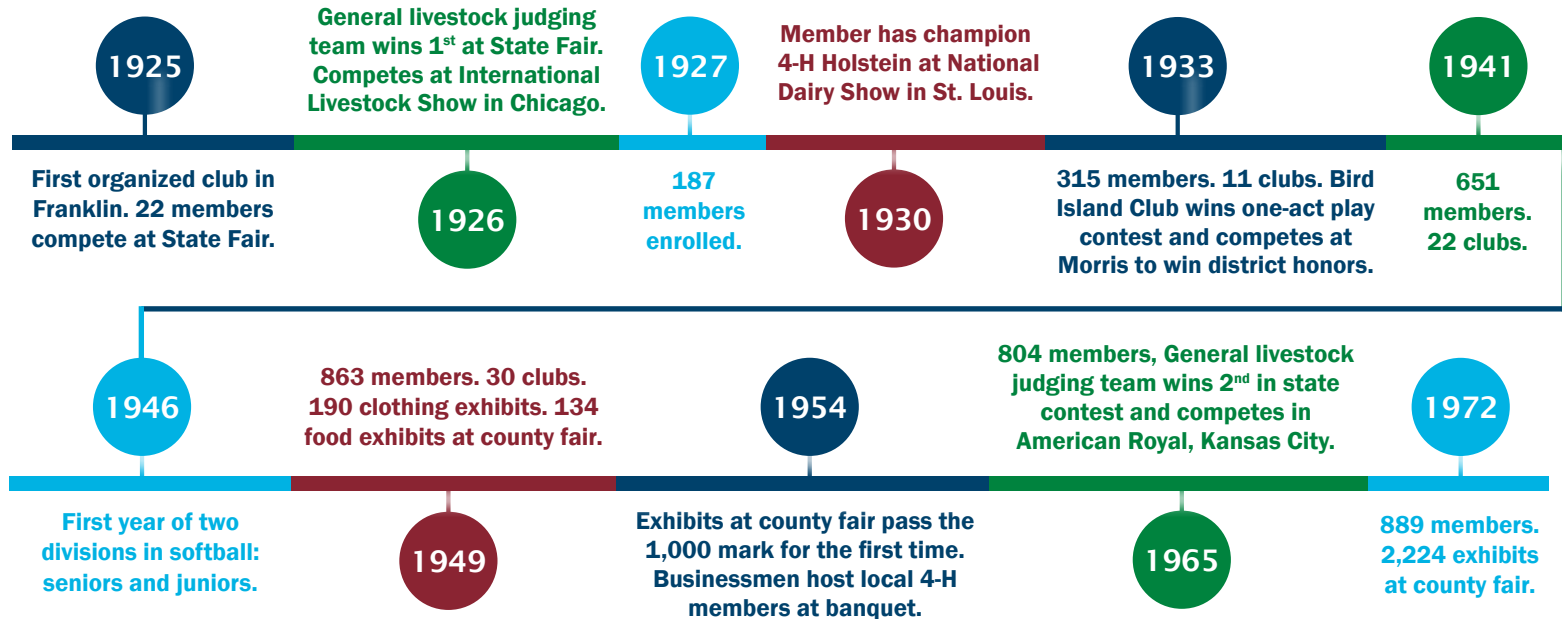


4-H Celebrates 100 Years in Renville County

Submitted by the Renville County Extension Office

Observing 100 years of longevity is a momentous occasion for celebration! 4-H in Renville County has been in existence for a century, supporting and inspiring youth to excel in, and develop, their interests, skills, and talents. Today, 4-H Club development is an established institution through the University of Minnesota Extension; possibly the greatest voluntary educational program ever developed. The four-leaf clover became the symbol to present the four H's of Head, Hands, Heart, and Health. The many dedicated men and women who have served as local leaders and volunteers to make the program successful are too numerous to mention.

TO TOUCH ON SOME HIGHLIGHTS IN THE EARLY YEARS, HERE IS A GLANCE AT THE GROWTH AND PEAK OF THE PROGRAM:



After a year of drastically reduced ability to facilitate youth participation due to COVID-19 disruptions, 2021 will be an opportunity for local 4-H youth to shine in presenting their achievements at the Renville County Fair and then at the Minnesota State Fair.

If you know of a local student who is interested in joining the fun, have them contact Jon Dilworth, 4-H Program Coordinator for the Renville County Extension Office, at 320-523-3713. 4-H provides an opportunity for exploring, discovering, and making a difference for youth K-12 and beyond!

Meet Restorative Justice Volunteer Annie Tepfer



Annie Tepfer,
Restorative Justice
Volunteer

Annie has always taken interest in programs that involved supporting families within our county that may be struggling or facing challenges.

In the past, she was involved in a talking circle, and thought the concept of Restorative Justice was intriguing. Annie was introduced to the Restorative Justice Program by Coordinator, Andrew Peltz.

To prepare for being a Restorative Justice volunteer, Annie went through four or five volunteer training sessions over a months time to learn about the process. During the training, volunteers were divided into four groups that continued to meet after the training so that, when they had their first family, they were comfortable with how the circle process works.

When asked about being nervous at the start, Tepfer replied, ***"I think everyone was, just because it was such a new process to us that would involve hearing some tough stories."*** She believed the nerves came from questioning herself and wondering how she would be helpful to this family.

Article continued on Page Five →

PAST RENVILLE COUNTY 4-H CLUBS

Most original clubs were organized geographically by townships with residents from adjacent townships uniting to form alliances.

- Atomic Gophers (*Bird Island Township*)
- Brookfield Buffalo Bills (*Brookfield Township*)
- Flora Shooting Stars (*Flora Township*)
- Kingman Ramblers (*Kingman Township*)
- Lucky Clovers (*Troy Township*)
- Palmyra Willing Workers (*Pamlyra Township*)
- Bird Island Town and Country (*Bird Island, Melville Townships*)
- Ericson Eager Beavers (*Ericson, Wang Townships*)
- Hector Hi-Hitters (*Hector, Melville Townships*)
- Lakeside Comets (*Boon Lake, Brookfield Townships*)
- Osceola Jacks and Jills (*Osceola Township*)
- Winfield 4-Leaf Clovers (*Winfield Township*)



Former 4-H participants showing their exhibits at the Renville County Fair.



Cairo Sharpshooters participating in a parade in celebration of 50 years of 4-H youth

TODAY'S RENVILLE COUNTY 4-H CLUBS

143 active members with six active clubs including:

- **Birch Coulee 4-H Club** was organized in 1946 (*Birch Coulee Township*)
- **Danube Full-O-Pep 4-H Club** was organized in 1954 (*Troy, Winfield Townships*)
- **Sacred Heart Eager Beavers 4-H Club**, formerly Sacred Heart Hi-Lites, was organized in 1941 (*Hawk Creek, Sacred Heart Townships*)
- **Cairo Sharpshooters 4-H Club** was organized in 1946 (*Cairo Township*)
- **Renville Aces 4-H Club** was organized in 1930 (*Emmet, Crooks, Sacred Heart Townships*)
- **Trailblazers 4-H Club** was organized in 1998 as a Cloverbud Club (*Kindergarten-2nd grade*) and in 2001 as a regular club (*Bird Island area Townships*)

Annie values Restorative Justice because she believes punishment alone does not always work. ***"It's about repairing the harm done and giving that participant the opportunity to work their way through whatever struggle they are going through with a group of people that care,"*** she mentioned.

Something positive Annie gets back from volunteering is the relationships that are built, and helping to restore and repair relationships within families and within the community. ***"It's transformational."*** Tepfer explained. ***"All of us need a support system."***

Annie recognizes that some of their struggling families don't have a support system in place. She feels that the

Restorative Justice volunteers can step in and be that extra voice of support, and it can truly make a difference.

One piece of advice Annie has for others who are thinking about volunteering is that it is completely worth your time volunteering to intercede in a family's life with their child. ***"We work as a team creating a safe circle of adults that they can be responsible to and receive support from. One caring adult can make a big difference in a child's life, which is really what it is all about."*** she concluded.

If you are interested in learning more about becoming a Restorative Justice Volunteer and making a difference in your community, contact Andrew Peltz, Restorative Justice Coordinator at andrewp@renvillecountymn.com or 320-523-3871.



Renville
COUNTY
Service · Stewardship · Shared Responsibility

2021 EVENTS

June -
September

Buffalo Lake Farmer's Market,
Buffalo Lake (Saturdays 8:00 a.m.- Noon)

June 10 - 12

Sugar Beet Days, Renville

June 12

Renville Fire Department Rib Fundraiser,
Renville

June 12

Flag Day Golf Tournament, Sons of
the American Legion, Olivia

June 14

Flag Disposal, American Legion, Olivia

Mid June -
September

Fairfax Farmer's Market,
Fairfax (Tuesdays 4:00 p.m.)

June 16 -
September 1

Renville County Market, Cultural Center,
Bird Island (Wednesdays 4:00 p.m. - 7:30 p.m.)

June 16 - 20

Island Days, Bird Island

June 24 - 27

Dayz of Thunder, Fairfax

July -
September

Hector Farmer's Market,
Hector (Wednesdays 3:00 p.m. - 5:00 p.m.)

July 4

Independence Day Celebration, Morton

July 6 - 11

Corn Chaff Days, Hector

July 7 - 11

Danube Fun Days, Danube

July 8 -
September

Olivia Farmer's Market,
Olivia (Thursdays 1:30 p.m. - 5:30 p.m.)

July 12 - 18

Buffalo Lake Days, Buffalo Lake

July 14 - 18

Summerfest, Sacred Heart

July 19 - 25

Corn Capital Days, Olivia

July 23 - 25

Catfish Derby Days, Franklin

July 24

Wogen Outdoor Adventure,
Pond Park, Olivia

July 25

Lions Fly-In Breakfast, Olivia

August 3

Fairfax National Night Out, Fairfax

August 3

Renville National Night Out, Renville

August 6

Renville County Walk in the Park, Olivia

August 8

Bechyn Czech Festival, Bechyn

August 12 - 14

Renville County Fair, Bird Island

August 14

Ride to Remember

September 11

Renville County Fireman's Rib Cook Off,
American Legion, Olivia

September 19

Hector Lion's Fly-In Pancake Breakfast,
Municipal Airport, Hector

October 7

Octoberfest German Meal,
American Legion, Olivia

October (TBD)

Halloween Event, Hector

November 24

Fall Craft and Vendor Show, Olivia

December 1

Taste of Bechyn, American Legion, Olivia

December 2

Unforgettable Christmas, Hector

December 2

Holiday Happenings, Olivia

December 3

Old Fashioned Christmas, Bird Island

December (TBD)

Fireman's Pancake Breakfast, Renville

December (TBD)

Sacred Heart Santa Day, Sacred Heart



Visit www.renville.com for
the most up-to-date listing of
community events.

Event dates are subject to change
and events may be canceled.

Renville County Parks Working on Trail Enhancement Project in Collaboration with Renville County EDA and Statewide Health Improvement Partnership (SHIP)



For the past three years, Renville County Parks has been working on a significant Trail Enhancement Project, in collaboration with the Renville County EDA and the Statewide Health Improvement Partnership (SHIP).

"The project began in late 2018 with a \$10,000 planning grant from SHIP to get the trail enhancement project started." shared Jesse Diehn, Renville County Parks Manager. ***"The Parks Department and EDA also contributed funds to the planning phase, which allowed for the Trail Enhancement Committee to work with Toole Design Group to create a Renville County Parks Trails and Wayfinding Plan."*** continued Diehn.

The trail plan was completed in early 2019 and provided the committee with the following objectives to implement the enhancement project in Beaver Falls, Birch Coulee, Lake Allie, Mack Lake, Vicksburg and Skalbekken County Parks.

OBJECTIVES:

- 1) Create trail rating and feature maps for each park
- 2) Create and install park kiosks in each park, showcasing the trail rating map
- 3) Create and install trail name and directional signage in each park

This project seeks to increase use of park trails by residents and visitors, resulting in better quality of life and better access to outdoor recreational opportunities such as walking, hiking, biking and horseback riding. Secondly, this project

Trail Enhancement Status Update:			
Park:	Trail Rating/ Feature Maps:*	Kiosks:	Trail Name/ Directional Signage:
Beaver Falls	Complete	Installed	Installed
Birch Coulee	Complete	Ordered	Installed
Lake Allie	Complete (Feature map only)	N/A	N/A
Mack Lake	Available but need to verify trails	Installation goal 2021	Installation goal 2021
Vicksburg	Available but need to verify trails	Installation goal 2021	Installation goal 2021
Skalbekken	Available but need to verify trails	Installation goal 2022	Installation goal 2022

*Find trail rating and feature maps at www.renvillecountymn.com and at park kiosks

strives to increase tourism, contributing to our local economy and improving overall economic development in our region.

"We are excited to make the 26+ miles of Renville County Park trails more accessible, and user-friendly, to a wider variety of users." stated Stefanie Ryan, Renville County EDA/ Communications Coordinator.

"It has been a substantial undertaking for park staff to install trail enhancement signage over the past year, and we are excited about the progress made. We hope to have the project complete by 2022 and invite you to enjoy our parks and trails as we continue to improve them." concluded Diehn.

To learn more about this project, contact the Parks Department at 320-523-3747 or the EDA Office at 320-523-3656 or email ParksDept@renvillecountymn.com.



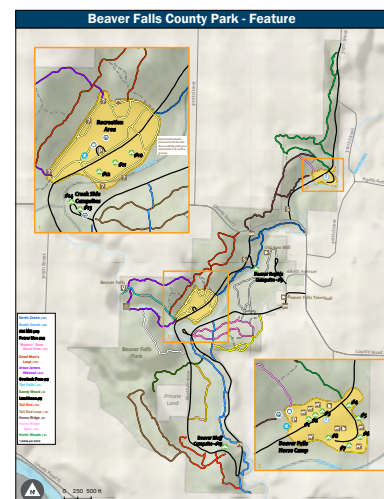
Renville County Parks Manager, Jesse Diehn, poses with the new kiosk that was installed by parks staff at the Beaver Falls Horse Camp in the summer of 2020



Trail name signage example



Directional signage examples
(Beginner, Intermediate, Difficult)



Feature map example
(Beaver Falls)

RRRSWA: More than a Recycling Facility

Disposal options available for garbage, demolition materials, and scrap metal

In October 2015, a new building opened on the west side of Redwood Falls, MN, replacing the old Redwood County Recycling Facility and the municipal solid waste portion of the Renville County Landfill.

Some may not realize it, but the recycling facility/transfer station accepts almost anything you need to dispose of, with a few exceptions. Recycling is one of the primary materials handled at the facility, but garbage, demolition materials, and scrap metals are also accepted.

Most city residents have the convenience of a curbside garbage cart to dispose of their household waste, and RRRSWA encourages you to continue to take advantage of that service. Although the curbside carts are convenient, there are times when people need to dispose of large, bulky items that just don't fit into their garbage cart, or they are rural residents who have chosen not to have garbage service. Carpet, recliners, couches, etc. are too large for most carts so residents are encouraged to "self-haul" those items to the facility for disposal, which is often less expensive than one would expect. Most garbage and demolition materials disposal costs are based on net weight. Mattresses and box springs are also items accepted for disposal at the transfer station. The cost for disposal of these depends on their condition and will need to be inspected upon delivery to the facility.

The RRRSWA also offers a designated box for scrap metal disposal. There is no charge for utilizing this box. RRRSWA staff request that any non-metal material (*concrete, wood, fabric, and plastic*) be removed first, before placing scrap metal into the roll-off box. Businesses and private citizens have the option to utilize the RRRSWA's "Secure Shred" service as well. If you own a business, you can request a cart to take to your location and pay \$25.00/cart once it is returned to the facility for shredding.

If you are a resident and have personal papers to shred, there is no fee for the service. If you shred your own paper, there is a grey cart stationed in front of the main office for you to deposit your sealed bags or boxes of shredded paper into. Staff will safely secure it after delivery to ensure it is baled and recycled properly. Please refrain from placing bags of shredded paper into your curbside or rural recycling cart/dumpster. Bags tend to tear/burst and the shreds become confetti and non-recyclable.

As mentioned, there are a few items that are not accepted at the recycling facility/transfer station. Items such as: tires, batteries, appliances, electronics, hazardous waste, fluorescent or LED bulbs are not accepted, but each has its own alternative location, or special collections, for disposal. (*Disposal options can be found on the Renville County website as indicated below.*)

GIVE US A TRY... You will be amazed at how easy it is to use our services!

RRRSWA OVERVIEW:

- Location: 907 West Bridge Street, Redwood Falls, Minnesota
- The RRRSWA offers 24/7/365 recycling options at this facility. (*Outside of the fence are three roll-off boxes into which you can place your recyclable materials.*)
- Facility hours for garbage, demolition, and scrap metal disposal: Monday-Friday, 8:00 A.M. to 4:00 P.M. (*Excluding holidays.*)
- Payment forms include cash or check only. (*No debit or credit cards accepted.*)

QUESTIONS? CONTACT RRRSWA:

- Call 507-637-1800 or 320-523-8002
- Like our Facebook page "Redwood/Renville Regional Solid Waste Authority"
- Visit our website at www.renvillecountymn.com. (*Select "Departments" and follow the "RRRSWA/Solid Waste - Landfill" link for prices, hours, acceptable materials, and more.*)



Redwood/Renville Regional Material Recovery Facility

Renville County Soil & Water Conservation District and Hawk Creek Watershed Project to Host Soil Health Event

Submitted by Renville County Soil and Water Conservation District

Renville County Soil and Water Conservation District (SWCD) in partnership with Hawk Creek Watershed Project (HCWP) will be facilitating a Soil Health Event this fall for the whole family. Parents can check out cover crop mixes and species exhibitions, equipment, and vendor booths, and can learn about different soil health practices like no-till and strip-till. The kids will get to participate in a fun activity and check out some cool demonstrations. This event is meant to be an open discussion between farmers to converse about how they are implementing soil health on their farms, what has been successful for them, and what has been problematic - whether it is cover crop establishment, weed management, etc.

We are coordinating with a local farmer who has been generous enough to host this event at his farm in western Renville County. This event will be very similar to the ones we have done in the past. In previous field days, participants were able to visit local producers' fields where cover crops and reduced tillage had been incorporated into corn, soybean, sugar beets, and small grain rotations. The participants at prior field days were also able to view different no-till/strip-till techniques and equipment along with various cover crop application types. Just like prior events both SWCD and HCWP staff will be present to provide insight into soil health practices and answer questions you might have.



Prior field day attendees checking out a cover crop mix that was inter-seeded into a local producer's soybean field.



The agenda is still being finalized and will be posted on the SWCD and HCWP websites, www.renvillewcd.com and www.hawkcreekwatershed.org, as well as our other outreach outlets such as our Facebook and Twitter. As the date approaches, we will be mailing out flyers and promoting the event over the local radio waves.

Minnesota Department of Health: Minnesota Well Index

Looking for information about your well?

The Minnesota Well Index (MWI) provides basic information about wells and borings, such as date, location, depth, geology, and construction. This information is often located on the Well Log Report. You can complete a search on the MWI website through text information or by a map-based search. Not all wells and borings are identified within the Index and the absence of information about a well on a property does not mean there is no well on that property.



To use the MWI, visit the Minnesota Department of Health (MDH) website at health.state.mn.us and search "Minnesota Well Index."

For additional information, contact the MDH Well Management Program at 1-800-383-9808.

Low-Interest Loan Programs for Well and Septic Improvements



Renville County administers low-interest loan programs to assist property owners with upgrading or replacing a failing septic system or for repairing or replacing a damaged or contaminated well. Loan terms are for 10 years with an interest rate and fees totaling 3%. This loan amount is added to property taxes as a special assessment with payment due

twice a year along with property taxes. The application process is simple, and the loan can be paid in full at any time.

For more information on, or to apply for, low-interest septic or well loans, contact Renville County Environmental Services at 320-523-3768 or ES@renvillecountymn.com.



Renville
COUNTY
Service · Stewardship · Shared Responsibility

TIRE COLLECTION EVENT

Event held in partnership with the Southern Minnesota Beet Sugar Cooperative (SMBSC)

Location

SMBSC Bird Island Piling Site
85592 County Road 5, Bird Island, MN 55310
(Use **SOUTH ENTRANCE** off Co. Rd. 11)

Date/Time

Wednesday,
July 14, 2021
10:00 AM to 6:00 PM

TIRE COLLECTION IS FOR RENVILLE COUNTY RESIDENTS ONLY

*(**NO** tires will be accepted from businesses and non-residents)*

Tire collection rates are .15 cents per pound.

Approximate charges (w/o rim) will be:

Car Tires: \$3.30

Truck Tires: \$16.50

Tractor/Heavy Equipment/Tracks:

Will vary due to weight

Rubber defoliator flails also accepted.

*Rim weight will be charged at an additional .15 cents per pound.

*Items such as garbage, appliances, and electronics will **NOT** be accepted during the tire collection.*

CASH OR CHECK ONLY

*****Renville County will charge an additional fee of \$100 per ton in specific situations, including but not limited to contamination. County representatives have the right to reject loads for any reason.*****

Electronic and Appliance Collection:

Will be held Wednesday, July 14th from 2:00 PM to 6:00 PM at the Renville County Fairgrounds in Bird Island. **(Use east end entrance.)**

NO tires, garbage, or household hazardous waste (HHW) will be accepted during this collection event.

For additional electronic and appliance collection dates, visit www.renvillecountymn.com and select "RRRSA" on the Departments page.





Renville
COUNTY
Service · Stewardship · Shared Responsibility

PESTICIDE CONTAINER COLLECTION

Location

Renville County Demolition Landfill
32877 County Road 4 | Olivia, MN 56277

Date/Time

August 24, 2021
9:00 AM to Noon

Renville County will only accept 250 containers or less without an appointment. Call 320-523-3759.

CHEMICAL CONTAINERS CAN, AND SHOULD, BE RETURNED TO RETAILERS FOR RECYCLING. (CONTACT YOUR RETAILER).

Follow these guidelines before bringing your containers:

Containers: Only rigid high-density polyethylene (HDPE) are accepted

Size: Small up to 55-gallon drums accepted

Clean: Triple rinse the containers to remove all residue and allow to dry

Twine/Bags: (Optional) Containers can be tied together with twine or bagged

Stains: Certain products discolor plastic and will be accepted provided no material can be smeared with a plastic glove

Label: Labels and booklets must be removed

Caps: Caps and foil seals must be removed

Unacceptable: Containers that do not meet these guidelines will be rejected

ACCEPTABLE



Container, thread, and lip are clean.



Handle and neck stained but clean.



Inside stained but rinsed clean.

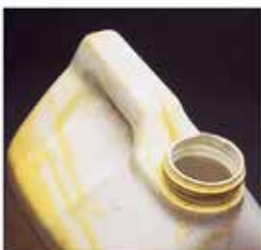


Inside is clean and dry.

NOT ACCEPTABLE



Dried formulation on container.



Dried formulation on thread.



Bottom is caked with dried residue.



Liquid residue in container.

County Directory:	Phone:
Administration	320-523-3710
Assessor	320-523-3645
Attorney	320-523-2661
Auditor/Treasurer	320-523-2071
Court Administrator	320-523-3680
Court Services/Probation	320-400-0711
Economic Development Authority	320-523-3656
Emergency Management	320-523-3838
Environmental Services	320-523-3768
Extension (4-H)	320-523-3713
HRA (Housing Programs)	507-637-4004
Human Services	320-523-2202 or 800-363-2533
Landfill/Solid Waste	320-523-1144
License	320-523-3612
Parks	320-523-3747
Public Health Services	320-523-2570
Public Works	320-523-3759
Recorder	320-523-3669
RRRSWA / Solid Waste / Household Hazardous Waste	320-523-8002 or 507-637-1800
Restorative Justice	320-523-3871
Sheriff	320-523-1161
Veterans Services	320-523-3763

COVID-19 VACCINE

COVID-19 VACCINES ARE AVAILABLE FROM MANY DIFFERENT PROVIDERS, INCLUDING PUBLIC HEALTH, CLINICS, AND PHARMACIES.

The best COVID-19 vaccine is the one in your arm!

- Pfizer (ages 12 and older)
- Moderna (ages 18 and older)
- Janssen (ages 18 and older)

Learn more about Renville County Public Health COVID-19 vaccination clinics at www.renvillecountymn.com.

Questions? Call Public Health at 320-523-2570.



You're invited to discover the *unexpected* in Renville County



Explore the outdoors in Renville County for abundant wildlife, breathtaking river views, rustic and historic parks, memorable sunsets, incredible rock formations, excellent fishing, scenic Minnesota River, friendly people, and more.

Unexpected adventures await you!

Lake Allie Camping Rates (All sites offer water and electric)

- 16 Sites
- Daily: \$27
- Weekly: \$175
- Monthly: \$550
- Seasonal (Memorial Day – Labor Day): \$1,630

Birch Coulee Camping Rates (Five sites offer water and electric)

- Daily: \$25
- Weekly: \$160

Rustic Camping

Available at the following parks for \$20 per night:

- Beaver Falls (15 Sites)
- Mack Lake (5 Sites)
- Vicksburg (11 Sites)
- Birch Coulee (7 Sites)
- Skalbekken (14 Sites)

Shelter Rental

- \$50 per day



To make your reservation, at least five days in advance, call 320-523-3747 or email ParksDept@renvillecountymn.com

Courthouse
500 East DePue
Olivia, MN 56277

Government Services Center
105 South 5th Street
Olivia, MN 56277

Landfill
32877 Co Rd 4
Olivia, MN 56277

RRRSWA
907 West Bridge Street
Redwood Falls, MN 56283

- 12 -



Renville
COUNTY

Service · Stewardship · Shared Responsibility

105 South 5th Street
Olivia, MN 56277

Phone: 320-523-3710

Email: lisah@renvillecountymn.com

Web: www.renvillecountymn.com

*Mailing list generated from Renville County Property Records.

Local
Postal Customer

PRSR STD
EDDM
U. S. POSTAGE
PAID
MARSHALL, MN
PERMIT NO. 20