



# **Renville County**

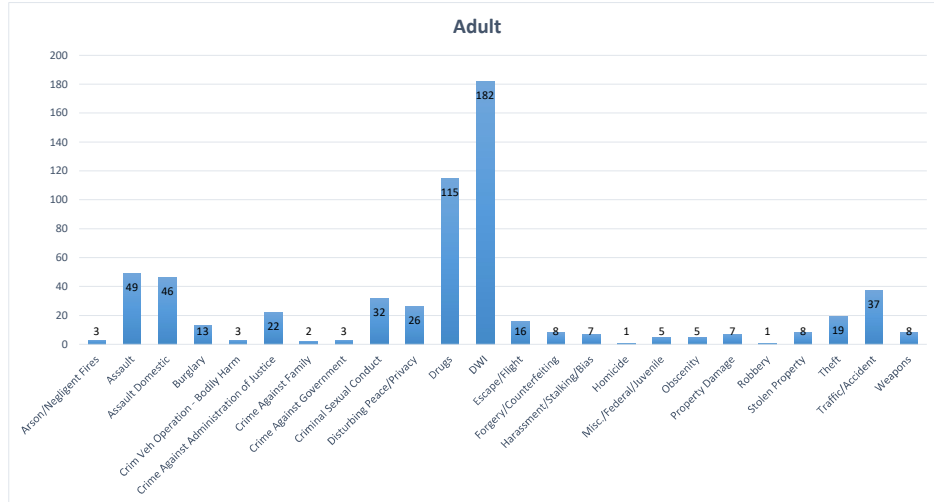
## **2025 ANNUAL REPORT**

Report Date: 2026-04-19

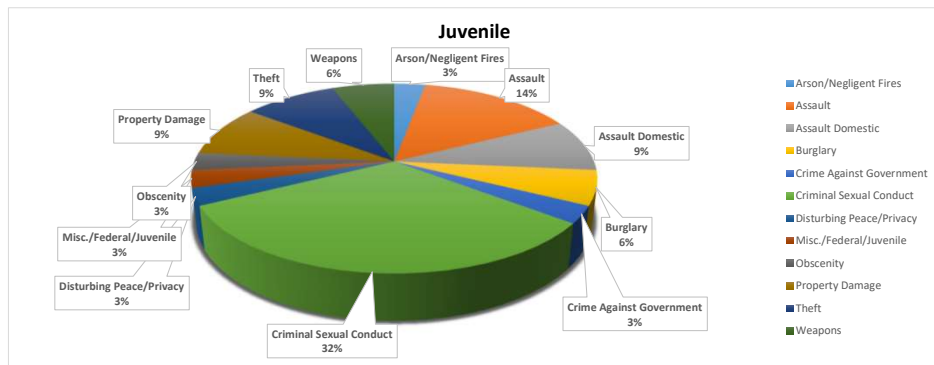
## Offense Type by Category

Offenses Open as of 12/31/2025

Offense Types	Adult
Assault	49
Assault Domestic	46
Burglary	13
Crim Veh Operation - Bodily Ha	3
Crime Against Administration o	22
Crime Against Family	2
Crime Against Government	3
Criminal Sexual Conduct	32
Disturbing Peace/Privacy	26
Drugs	115
DWI	182
Escape/Flight	16
Forgery/Counterfeiting	8
Harassment/Stalking/Bias	7
Homicide	1
Misc./Federal/Juvenile	5
Obscenity	5
Property Damage	7
Robbery	1
Stolen Property	8
Theft	19
Traffic/Accident	37
Weapons	8
<b>Grand Total</b>	<b>618</b>



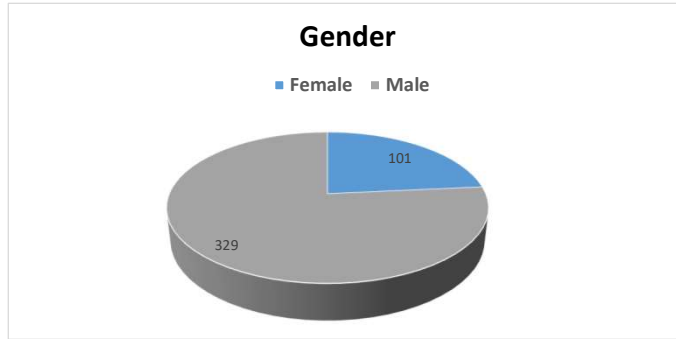
Offense Types	Juvenile
Arson/Negligent Fires	1
Assault	5
Assault Domestic	3
Burglary	2
Crime Against Government	1
Criminal Sexual Conduct	11
Disturbing Peace/Privacy	1
Misc./Federal/Juvenile	1
Obscenity	1
Property Damage	3
Theft	3
Weapons	2
<b>Grand Total</b>	<b>34</b>



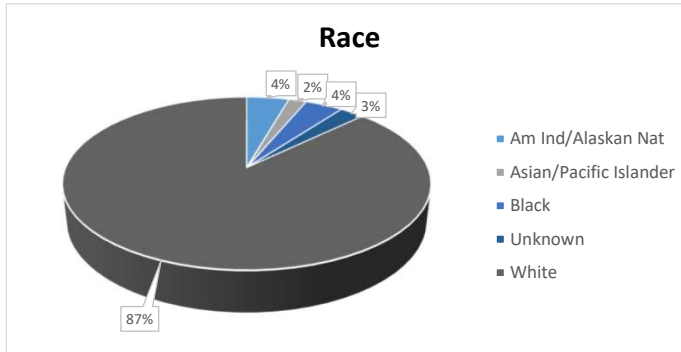
## Demographics

Open Clients as of 12/31/2025

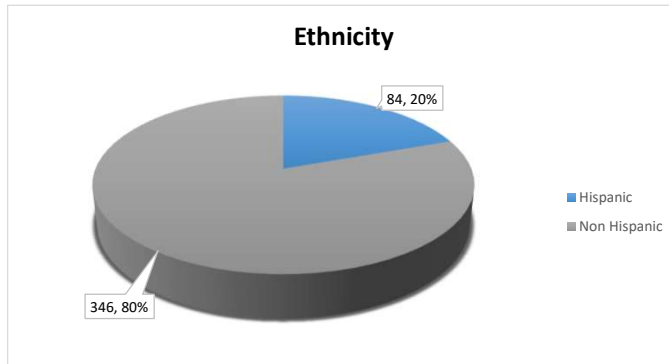
Gender	Total
Female	101
Male	329
<b>Grand Total</b>	<b>430</b>



Race	Total
Am Ind/Alaskan Nat	19
Asian/Pacific Islander	8
Black	17
Unknown	11
White	375
<b>Grand Total</b>	<b>430</b>



Ethnicity	Total
Hispanic	84
Non Hispanic	346
<b>Grand Total</b>	<b>430</b>

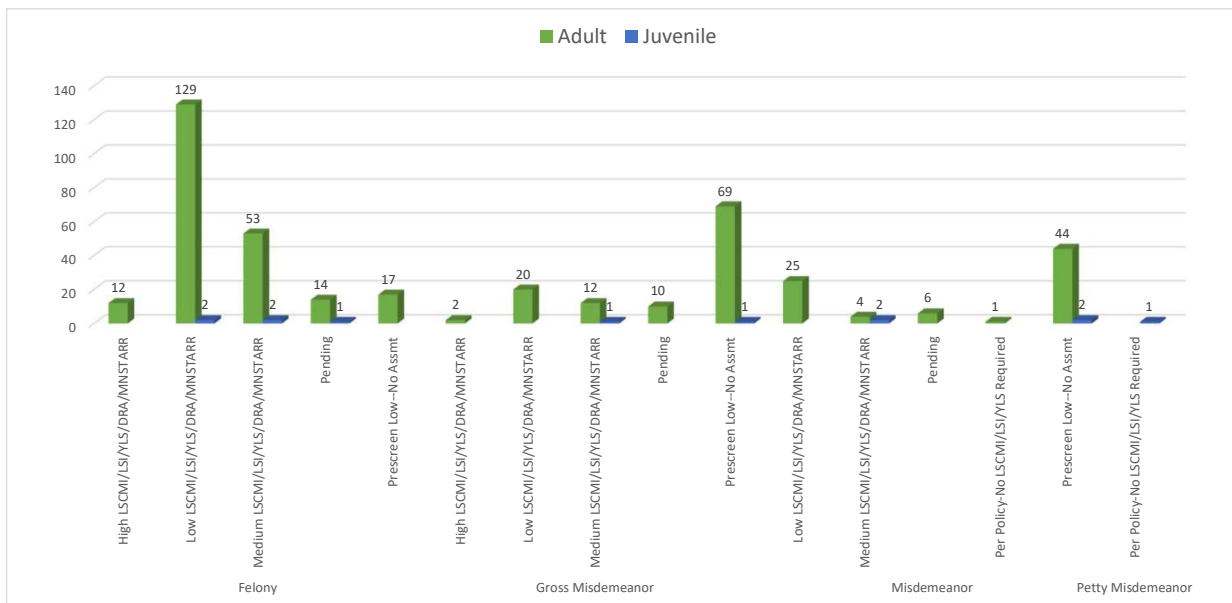


# Open Clients by Risk Level

CY2025

as of 12/31/2025

Risk Level	Adult	Juvenile	Grand Total
<b>Felony</b>	<b>225</b>	<b>5</b>	<b>230</b>
High LSCMI/LSI/YLS/DRA/MNSTARR	12		12
Low LSCMI/LSI/YLS/DRA/MNSTARR	129	2	131
Medium LSCMI/LSI/YLS/DRA/MNSTARR	53	2	55
Pending	14	1	15
Prescreen Low--No Assmt	17		17
<b>Gross Misdemeanor</b>	<b>113</b>	<b>2</b>	<b>115</b>
High LSCMI/LSI/YLS/DRA/MNSTARR	2		2
Low LSCMI/LSI/YLS/DRA/MNSTARR	20		20
Medium LSCMI/LSI/YLS/DRA/MNSTARR	12	1	13
Pending	10		10
Prescreen Low--No Assmt	69	1	70
<b>Misdemeanor</b>	<b>80</b>	<b>4</b>	<b>84</b>
Low LSCMI/LSI/YLS/DRA/MNSTARR	25		25
Medium LSCMI/LSI/YLS/DRA/MNSTARR	4	2	6
Pending	6		6
Per Policy-No LSCMI/LSI/YLS Required	1		1
Prescreen Low--No Assmt	44	2	46
<b>Petty Misdemeanor</b>		<b>1</b>	<b>1</b>
Per Policy-No LSCMI/LSI/YLS Required		1	1
<b>Grand Total</b>	<b>418</b>	<b>12</b>	<b>430</b>

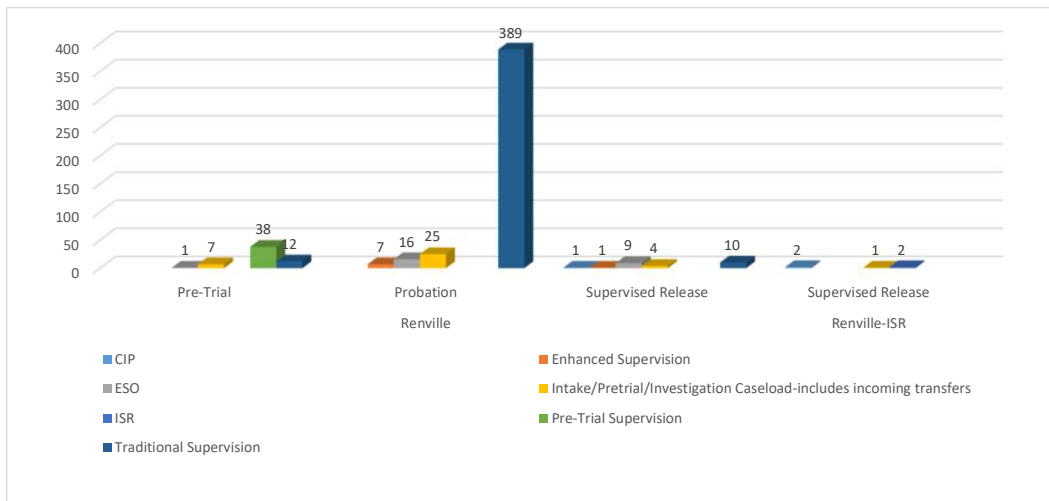


# Client Cases by Assignment Type

CY2025

## Caseloads by Assignment Type

Caseloads	CIP	Enhanced Supervision	ESO	Intake/Pretrial/ Investigation Caseload-includes incoming transfers	ISR	Pre-Trial Supervision	Traditional Supervision	Grand Total
<b>Renville</b>	<b>1</b>	<b>8</b>	<b>26</b>	<b>36</b>		<b>38</b>	<b>411</b>	<b>520</b>
Pre-Trial			1	7		38	12	58
Probation		7	16	25			389	437
Supervised Release	1	1	9	4			10	25
<b>Renville-ISR</b>	<b>2</b>			<b>1</b>	<b>2</b>			<b>5</b>
Supervised Release	2			1	2			5
<b>Grand Total</b>	<b>3</b>	<b>8</b>	<b>26</b>	<b>37</b>	<b>2</b>	<b>38</b>	<b>411</b>	<b>525</b>



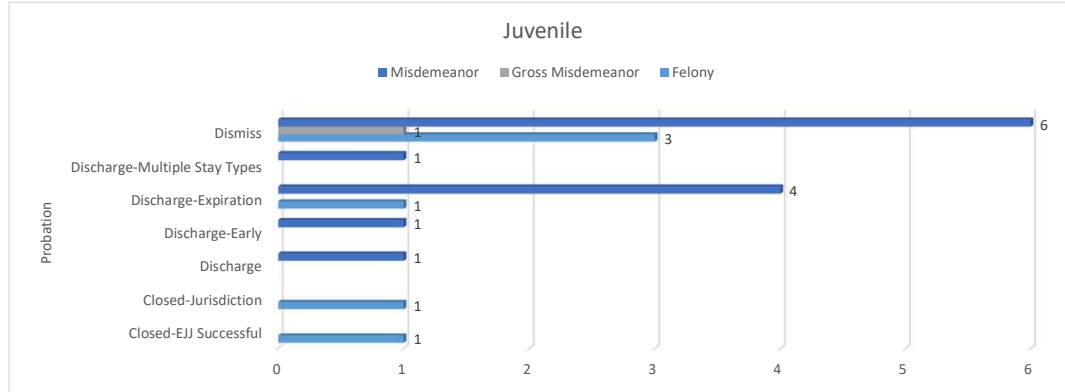
# Cases Closed Discharge Information

CY2025

## Probation Cases Discharged

Juvenile

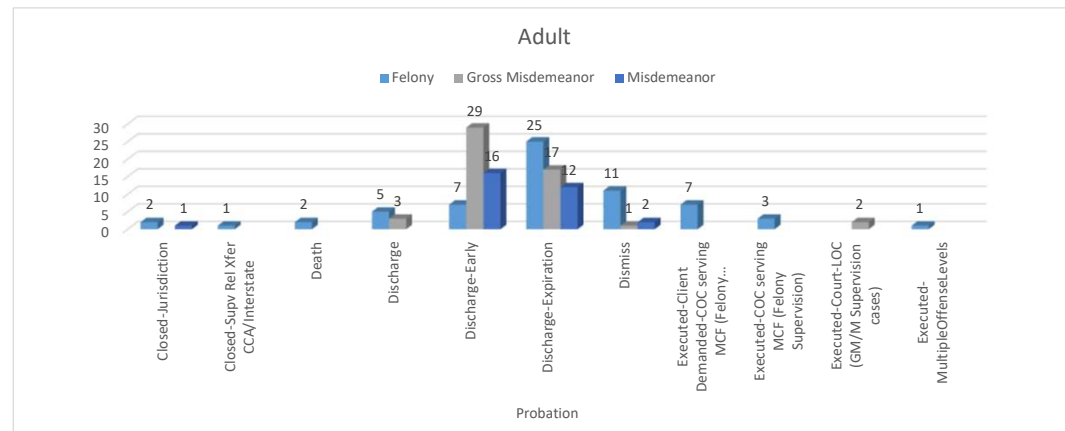
Close Reason	Felony		Gross Misdemeanor		Misdemeanor		Total #	Total %
	#	%	#	%	#	%		
<b>Probation</b>	<b>6</b>	<b>30.00%</b>	<b>1</b>	<b>5.00%</b>	<b>13</b>	<b>65.00%</b>	<b>20</b>	<b>100.00%</b>
Closed-EJJ Successful	1	5.00%		0.00%		0.00%	1	5.00%
Closed-Jurisdiction	1	5.00%		0.00%		0.00%	1	5.00%
Discharge		0.00%		0.00%	1	5.00%	1	5.00%
Discharge-Early		0.00%		0.00%	1	5.00%	1	5.00%
Discharge-Expiration	1	5.00%		0.00%	4	20.00%	5	25.00%
Discharge-Multiple Stay Types		0.00%		0.00%	1	5.00%	1	5.00%
Dismiss	3	15.00%	1	5.00%	6	30.00%	10	50.00%
<b>Grand Total</b>	<b>6</b>	<b>30.00%</b>	<b>1</b>	<b>5.00%</b>	<b>13</b>	<b>65.00%</b>	<b>20</b>	<b>100.00%</b>



## Probation Cases Discharged/Executed

Adult

Close Reason	Felony		Gross Misdemeanor		Misdemeanor		Total #	Total %
	#	%	#	%	#	%		
<b>Probation</b>	<b>64</b>	<b>43.54%</b>	<b>52</b>	<b>35.37%</b>	<b>31</b>	<b>21.09%</b>	<b>147</b>	<b>100.00%</b>
Closed-Jurisdiction	2	1.36%		0.00%	1	0.68%	3	2.04%
Closed-Supv Rel Xfer CCA/Intersta	1	0.68%		0.00%		0.00%	1	0.68%
Death	2	1.36%		0.00%		0.00%	2	1.36%
Discharge	5	3.40%	3	2.04%		0.00%	8	5.44%
Discharge-Early	7	4.76%	29	19.73%	16	10.88%	52	35.37%
Discharge-Expiration	25	17.01%	17	11.56%	12	8.16%	54	36.73%
Dismiss	11	7.48%	1	0.68%	2	1.36%	14	9.52%
Executed-Client Demanded-COC s	7	4.76%		0.00%		0.00%	7	4.76%
Executed-COC serving MCF (Felon	3	2.04%		0.00%		0.00%	3	2.04%
Executed-Court-LOC (GM/M Supervision cases)		0.00%	2	1.36%		0.00%	2	1.36%
Executed-MultipleOffenseLevels	1	0.68%		0.00%		0.00%	1	0.68%
<b>Grand Total</b>	<b>64</b>	<b>43.54%</b>	<b>52</b>	<b>35.37%</b>	<b>31</b>	<b>21.09%</b>	<b>147</b>	<b>100.00%</b>

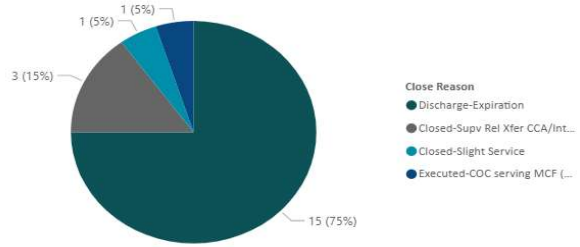


# Cases Closed Discharge Information

CY2025

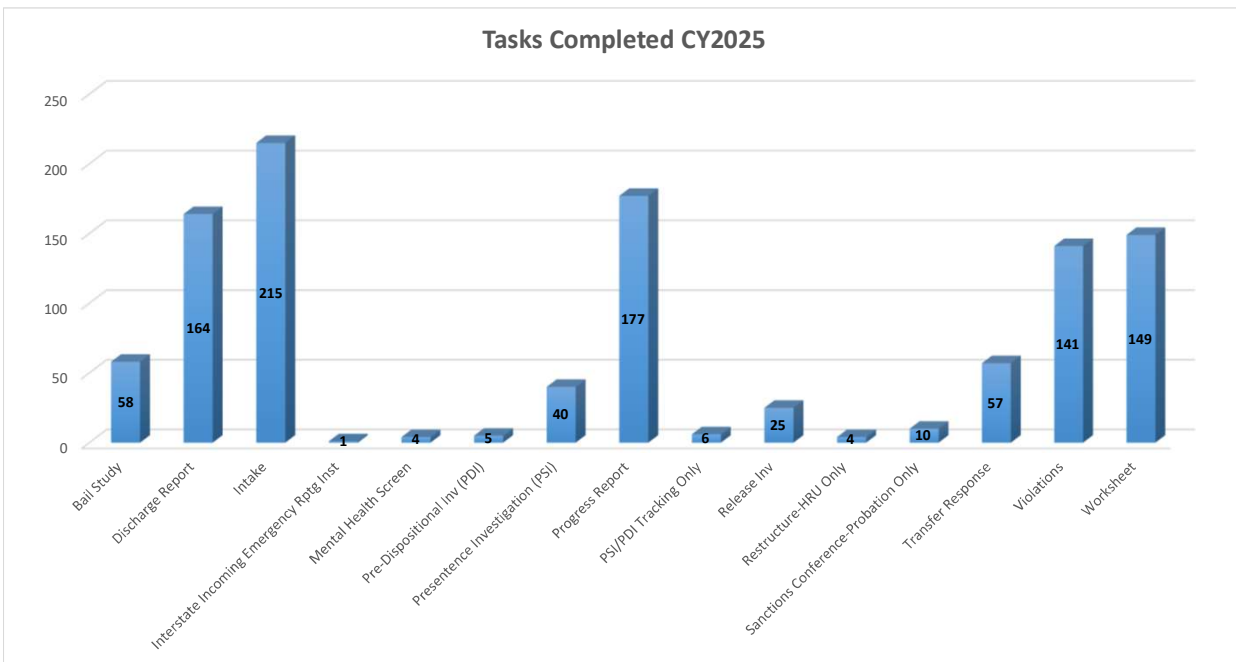
## Supervised Release Cases Discharged/Executed

Case Type	Felony	
	#	%
<b>Supervised Release</b>	<b>20</b>	<b>100.00%</b>
Closed-Slight Service	1	5.00%
Closed-Supv Rel Xfer CCA/Interstate	3	15.00%
Discharge-Expiration	15	75.00%
Executed-COC serving MCF (Felony Supervision)	1	5.00%
<b>Grand Total</b>	<b>20</b>	<b>100.00%</b>



## Tasks Completed in CY2025

Description	Number
Bail Study	58
Discharge Report	164
Intake	215
Interstate Incoming Emergency Rptg Inst	1
Mental Health Screen	4
Pre-Dispositional Inv (PDI)	5
Presentence Investigation (PSI)	40
Progress Report	177
PSI/PDI Tracking Only	6
Release Inv	25
Restructure-HRU Only	4
Sanctions Conference-Probation Only	10
Transfer Response	57
Violations	141
Worksheet	149
<b>Grand Total</b>	<b>1056</b>

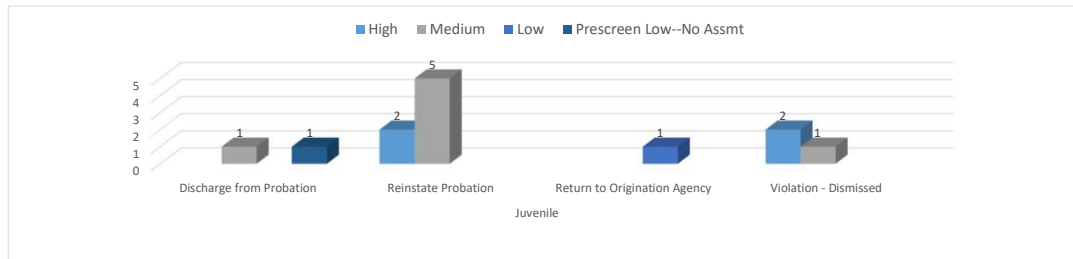


## Violation Outcome Information

CY2025

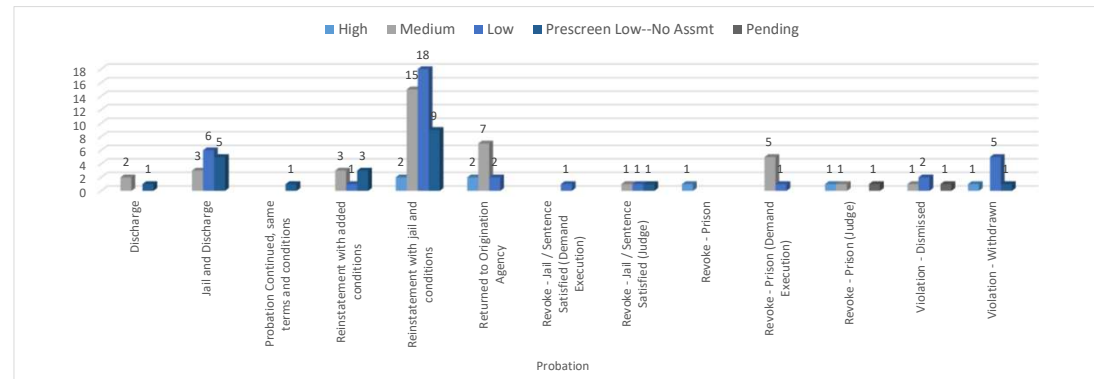
### Probation Violation Outcome Information Juvenile

Risk Level	High		Medium		Low		Prescreen Low--No Assmt		Total #	Total %
	#	%	#	%	#	%	#	%		
<b>Juvenile</b>	<b>4</b>	<b>30.77%</b>	<b>7</b>	<b>53.85%</b>	<b>1</b>	<b>7.69%</b>	<b>1</b>	<b>7.69%</b>	<b>13</b>	<b>100.00%</b>
Discharge from Probation		0.00%	1	7.69%	0	0.00%	1	7.69%	2	15.38%
Reinstate Probation	2	15.38%	5	38.46%	0	0.00%	0	0.00%	7	53.85%
Return to Origination Agency		0.00%		0.00%	1	7.69%		0.00%	1	7.69%
Violation - Dismissed	2	15.38%	1	7.69%	0	0.00%		0.00%	3	23.08%
<b>Grand Total</b>	<b>4</b>	<b>30.77%</b>	<b>7</b>	<b>53.85%</b>	<b>1</b>	<b>7.69%</b>	<b>1</b>	<b>7.69%</b>	<b>13</b>	<b>100.00%</b>



### Adult

Risk Level	High		Medium		Low		Prescreen Low--No Assmt		Pending		Total #	Total %
	#	%	#	%	#	%	#	%	#	%		
<b>Probation</b>	<b>7</b>	<b>6.67%</b>	<b>38</b>	<b>36.19%</b>	<b>37</b>	<b>35.24%</b>	<b>21</b>	<b>20.00%</b>	<b>2</b>	<b>1.90%</b>	<b>105</b>	<b>100.00%</b>
Discharge		0.00%	2	1.90%	0	0.00%	1	0.95%	0	0.00%	3	2.86%
Jail and Discharge		0.00%	3	2.86%	6	5.71%	5	4.76%	0	0.00%	14	13.33%
Probation Continued, same terms and conditions		0.00%		0.00%		0.00%	1	0.95%	0	0.00%	1	0.95%
Reinstatement with added conditions		0.00%	3	2.86%	1	0.95%	3	2.86%	0	0.00%	7	6.67%
Reinstatement with jail and conditions		0.00%	15	14.29%	18	17.14%	9	8.57%	0	0.00%	44	41.90%
Returned to Origination Agency	2	1.90%	7	6.67%	2	1.90%		0.00%		0.00%	11	10.48%
Revoke - Jail / Sentence Satisfied (Demand Execution)		0.00%		0.00%	1	0.95%		0.00%		0.00%	1	0.95%
Revoke - Jail / Sentence Satisfied (Judge)		0.00%	1	0.95%	1	0.95%	1	0.95%		0.00%	3	2.86%
Revoke - Prison	1	0.95%		0.00%		0.00%		0.00%		0.00%	1	0.95%
Revoke - Prison (Demand Execution)		0.00%	5	4.76%	1	0.95%		0.00%		0.00%	6	5.71%
Revoke - Prison (Judge)	1	0.95%	1	0.95%		0.00%		0.00%	1	0.95%	3	2.86%
Violation - Dismissed		0.00%	1	0.95%	2	1.90%		0.00%	1	0.95%	4	3.81%
Violation - Withdrawn	1	0.95%		0.00%	5	4.76%	1	0.95%		0.00%	7	6.67%
<b>Grand Total</b>	<b>7</b>	<b>6.67%</b>	<b>38</b>	<b>36.19%</b>	<b>37</b>	<b>35.24%</b>	<b>21</b>	<b>20.00%</b>	<b>2</b>	<b>1.90%</b>	<b>105</b>	<b>100.00%</b>



# Violation Outcome Information

CY2025

## Supervised Release Violation Outcome Information

ISR/Supervised Release

Risk Level	High		Medium		Low		Total #	Total %
	#	%	#	%	#	%		
<b>Supervised Release</b>	<b>6</b>	<b>66.67%</b>	<b>2</b>	<b>22.22%</b>	<b>1</b>	<b>11.11%</b>	<b>9</b>	<b>100.00%</b>
<b>Renville</b>	<b>4</b>	<b>44.44%</b>	<b>2</b>	<b>22.22%</b>	<b>0.00%</b>	<b>0.00%</b>	<b>6</b>	<b>66.67%</b>
Restructure and Release	2	22.22%	2	22.22%	0.00%	0.00%	4	44.44%
Revocation and Return	2	22.22%		0.00%	0.00%	0.00%	2	22.22%
<b>Renville-ISR</b>	<b>2</b>	<b>22.22%</b>		<b>0.00%</b>	<b>1</b>	<b>11.11%</b>	<b>3</b>	<b>33.33%</b>
Revocation and Return	2	22.22%		0.00%	1	11.11%	3	33.33%
<b>Grand Total</b>	<b>6</b>	<b>66.67%</b>	<b>2</b>	<b>22.22%</b>	<b>1</b>	<b>11.11%</b>	<b>9</b>	<b>100.00%</b>

